

① PARTIAL ELEVATION - WEST ARRAY  
 (SEE MORE)











# LADWP Built Projects



WOODBURY UNIVERSITY



DESIGN-BUILD STUDIO

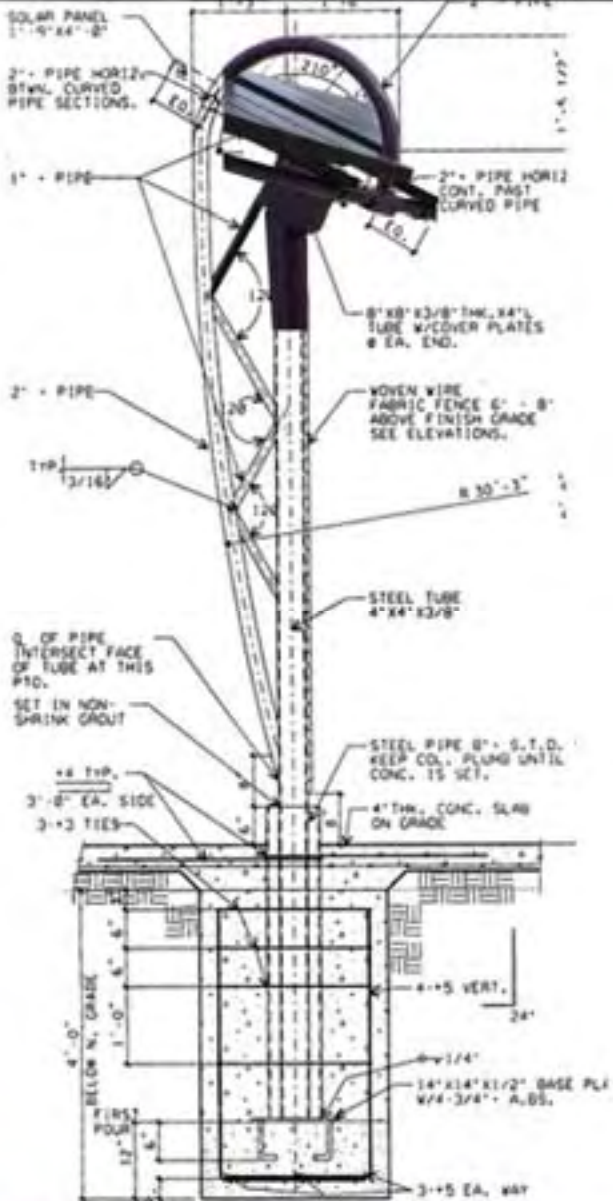








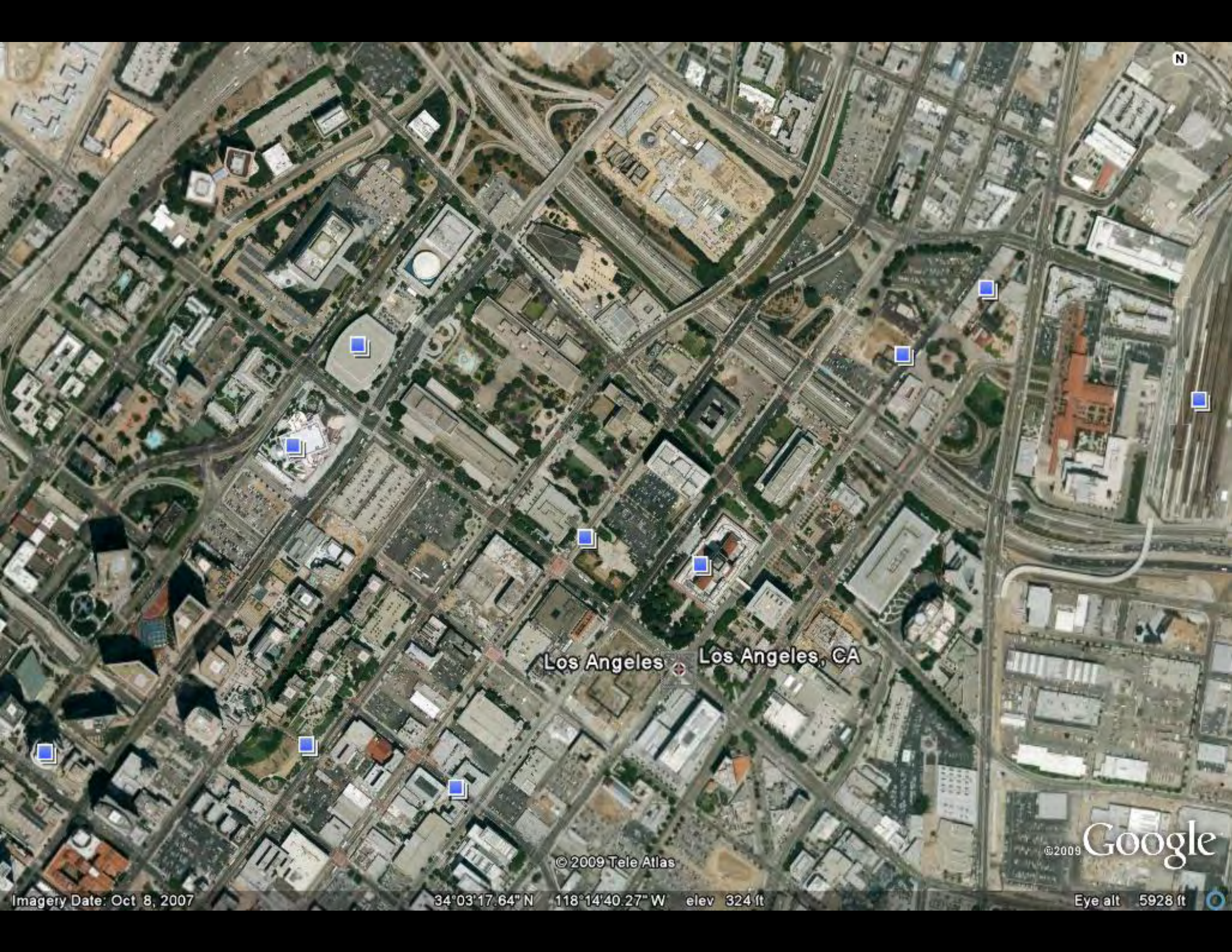
# June & Fountain Community Park



Hollywood, CA







N

Los Angeles Los Angeles, CA

©2009 Google

© 2009 Tele Atlas

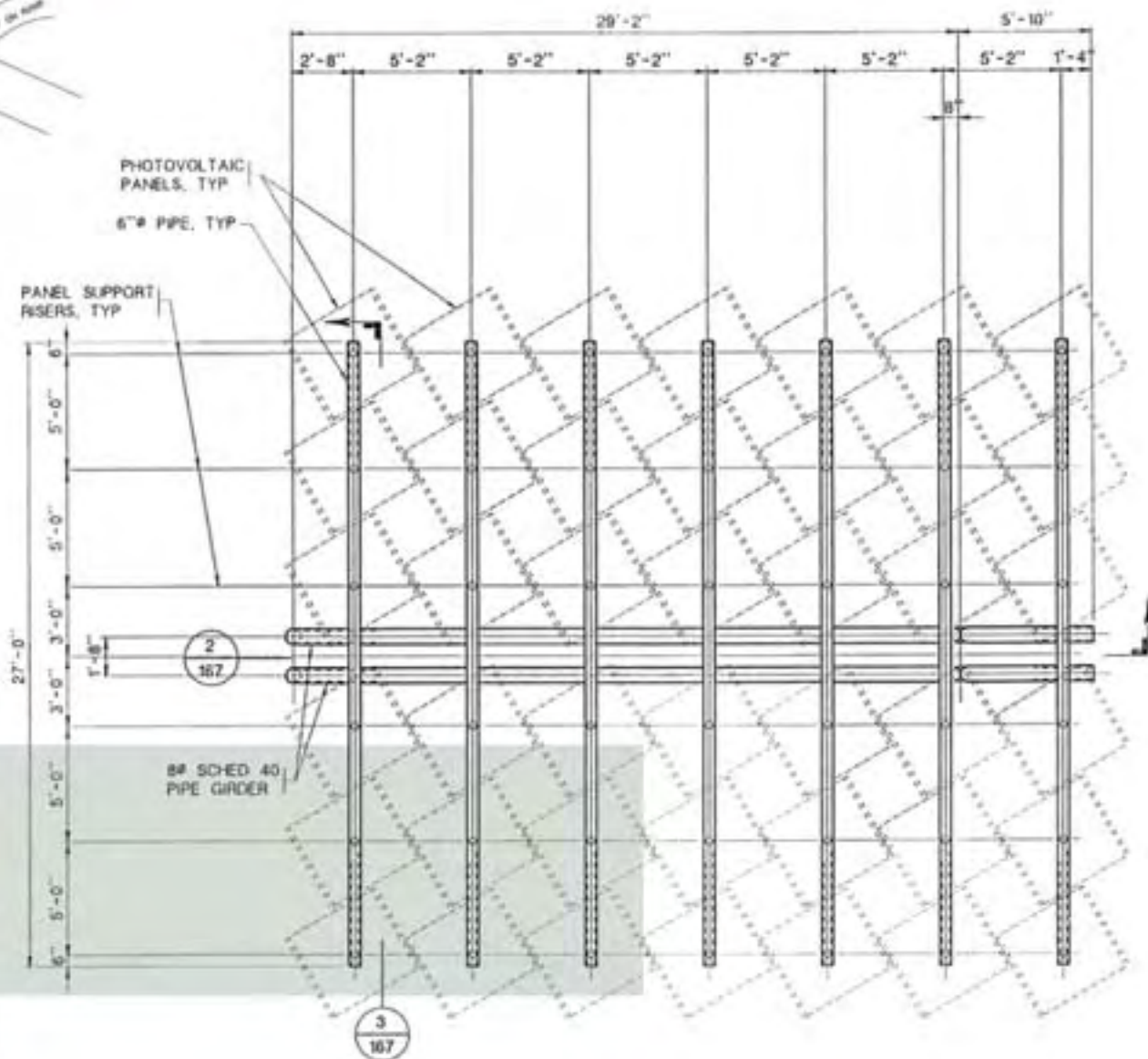
Imagery Date: Oct 8, 2007

34°03'17.64" N 118°14'40.27" W elev 324 ft

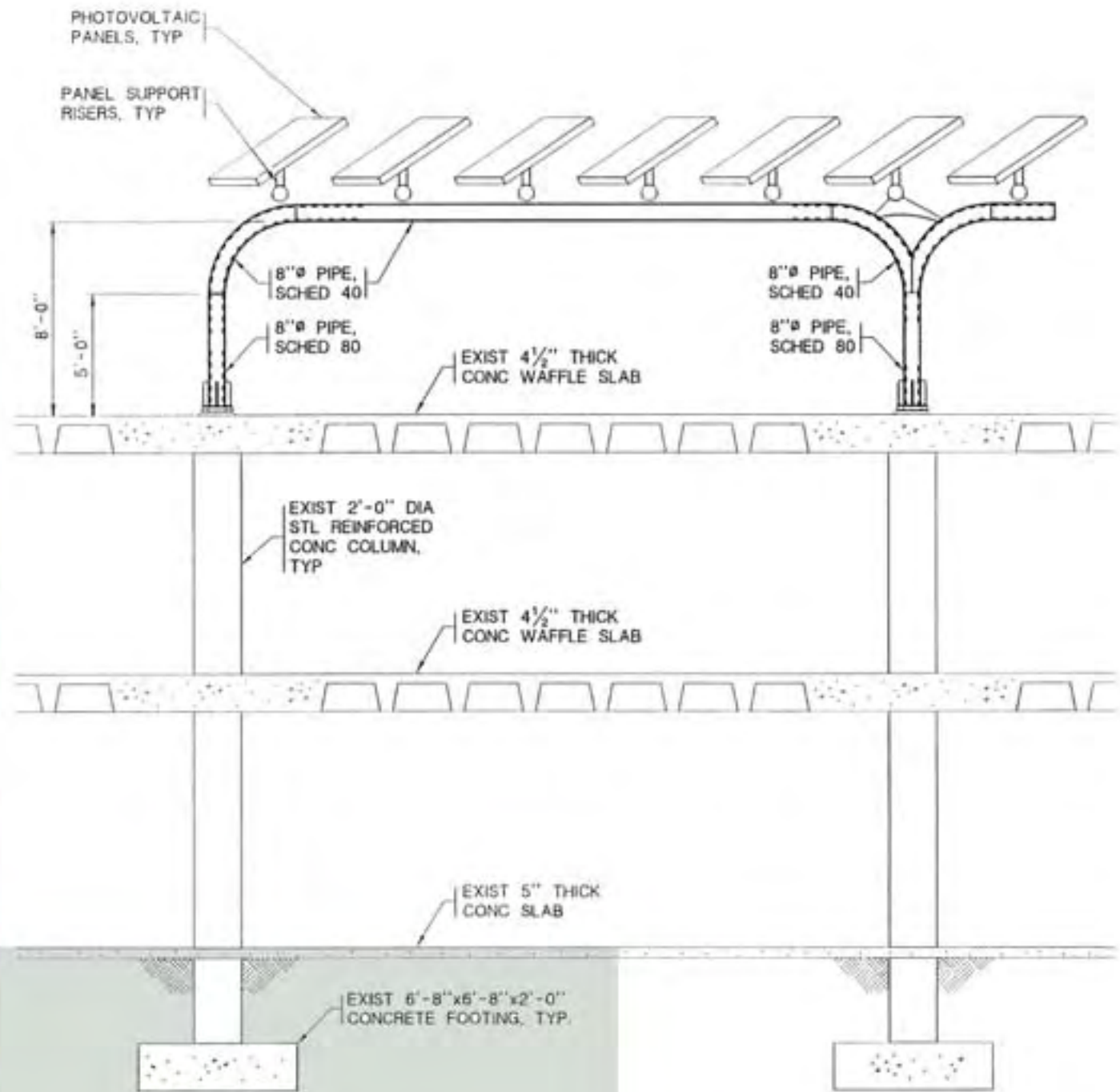
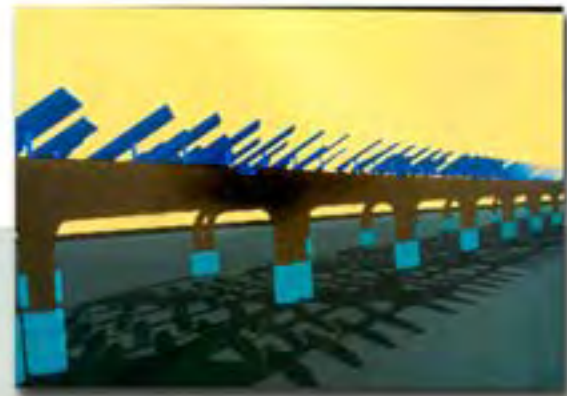
Eye alt 5928 ft



# LOS ANGELES DEPARTMENT OF WATER AND POWER HEADQUARTERS





















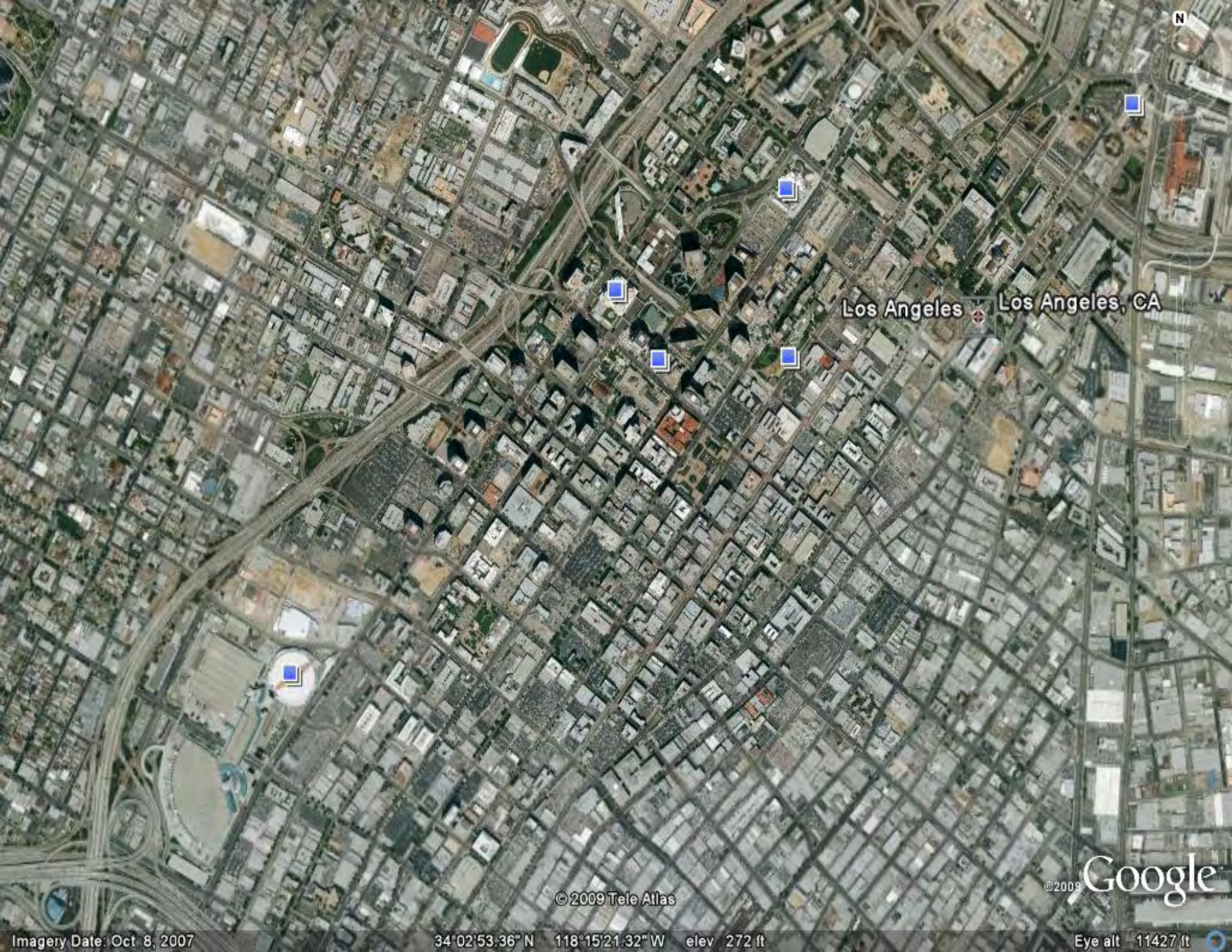












N

Los Angeles Los Angeles, CA

© 2009 Tele Atlas

©2009 Google

Imagery Date: Oct 8, 2007

34°02'53.36" N 118°15'21.32" W elev 272 ft

Eye alt 11427 ft





# LOS ANGELES CONVENTION CENTER

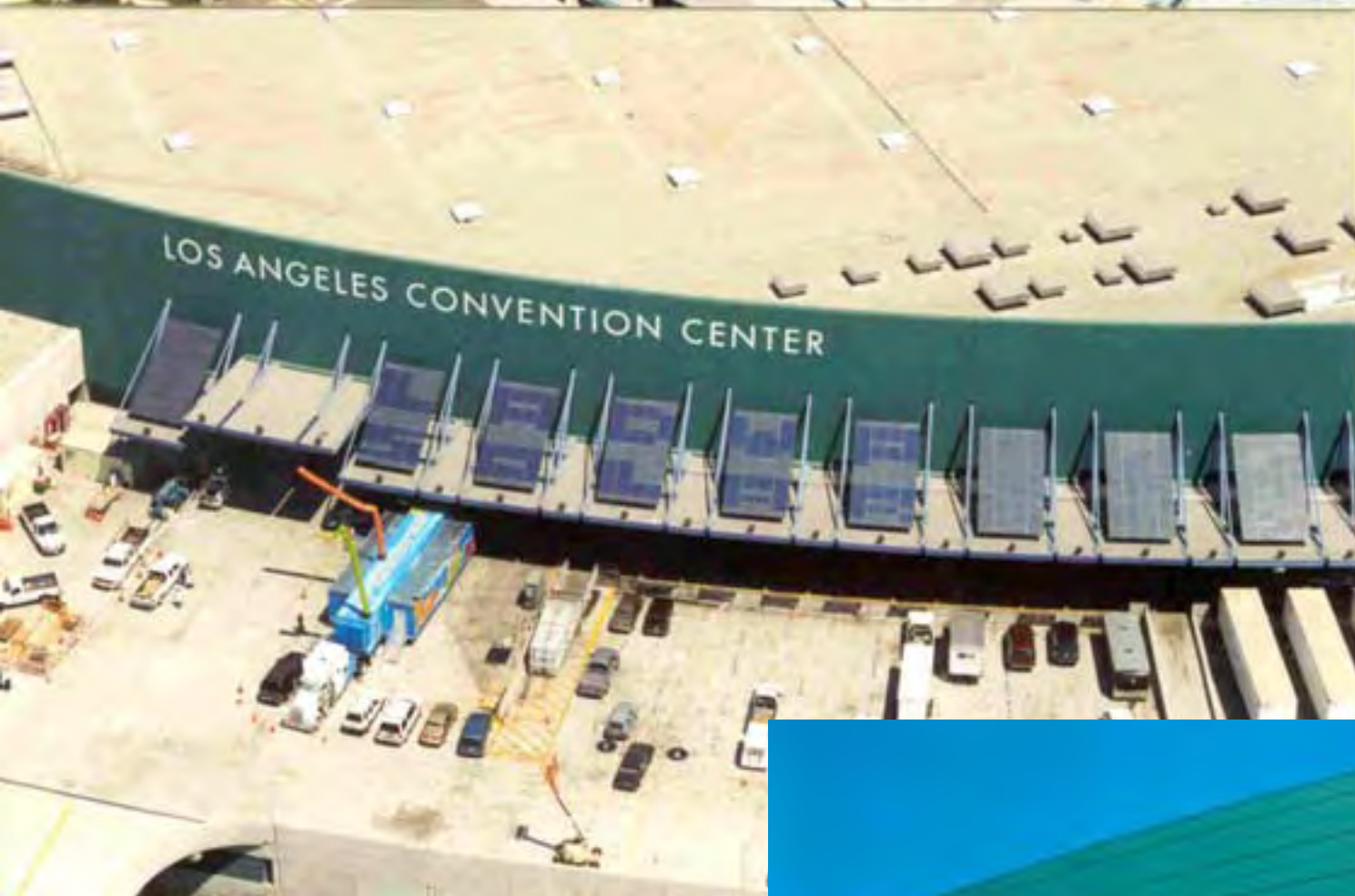












**YOUR ELECTRONIC AD HERE! SUPERBRIGHT! SUPERSIZE!**

For Information, Contact Your Local City Councilperson

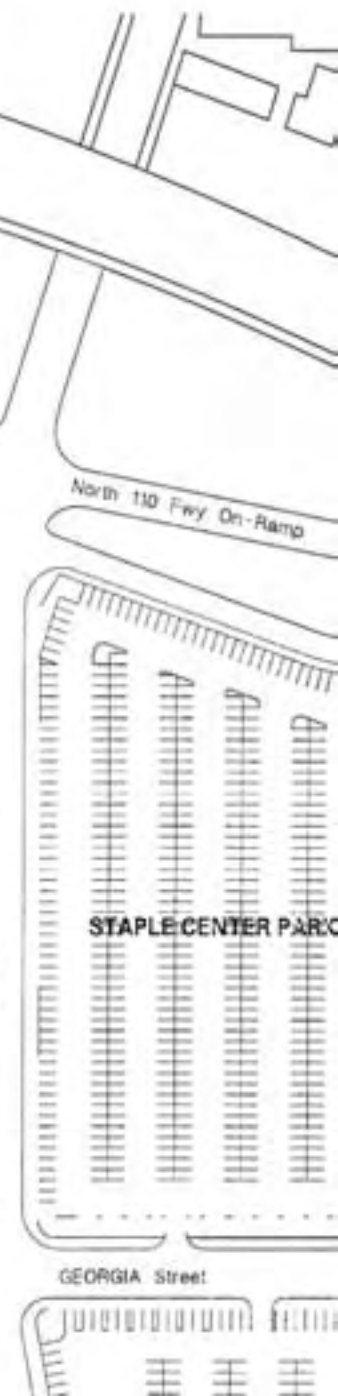
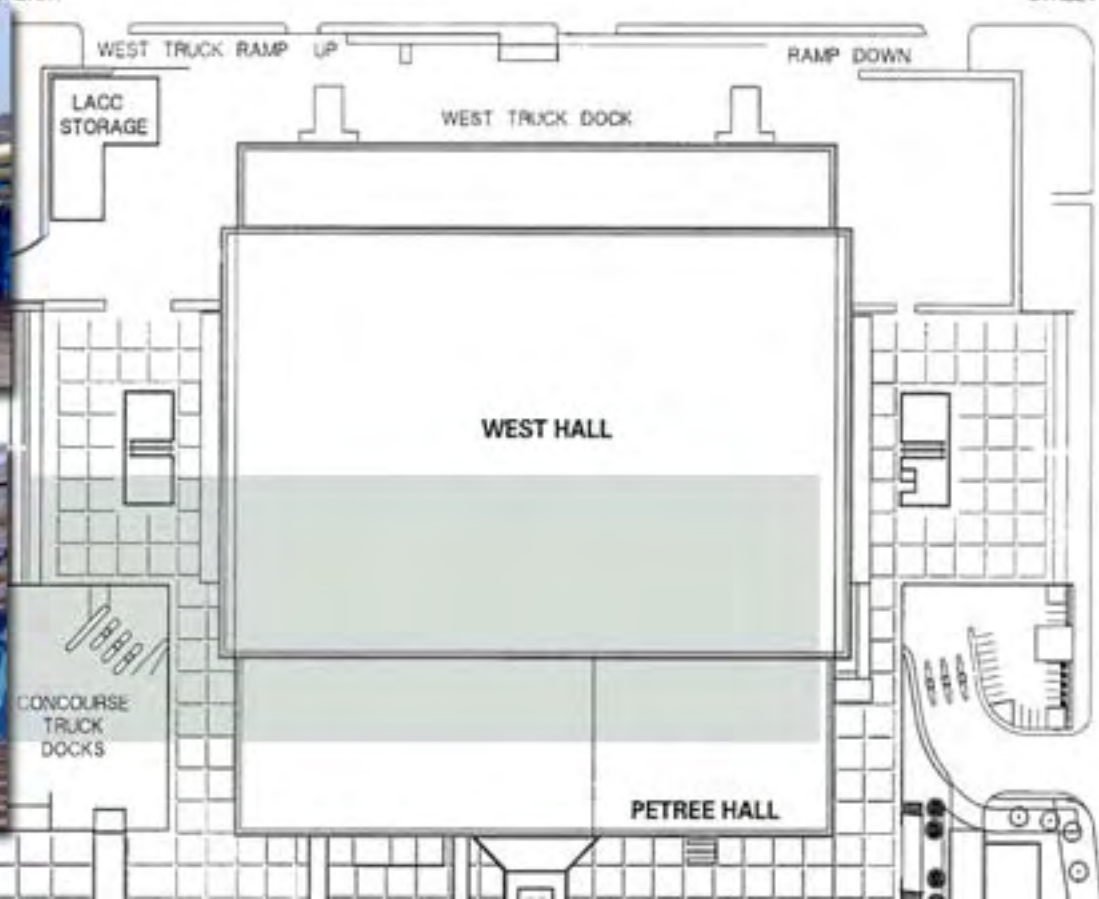
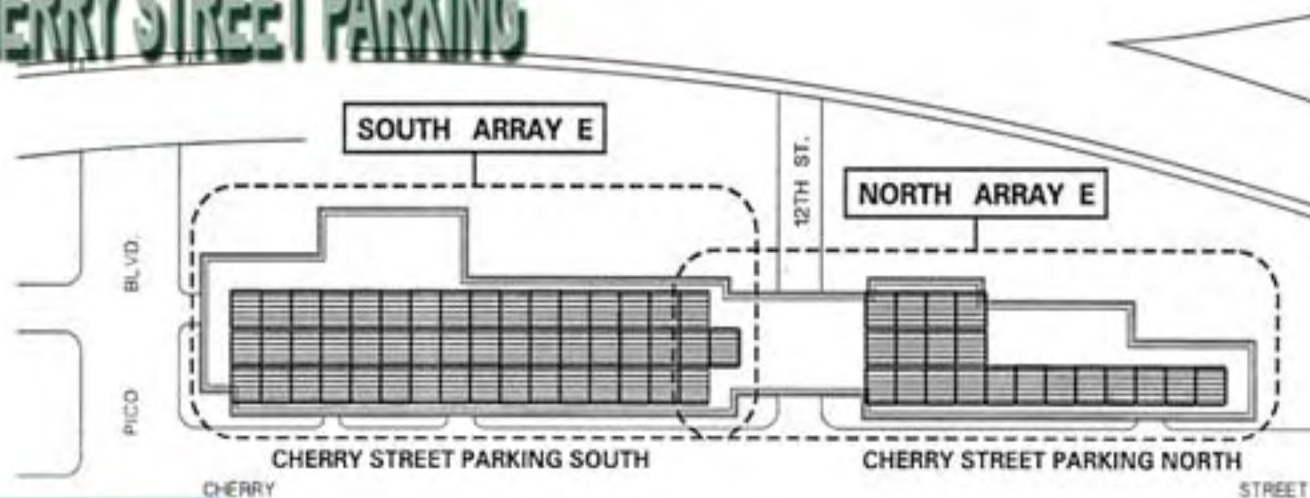
110 West  
Downtown

Pico Blvd  
Convention  
Center





# LOS ANGELES CONVENTION CENTER PHASE 2: CHERRY STREET PARKING













Sun Valley Branch Library







Ascott Branch Library



Canoga Park  
Library



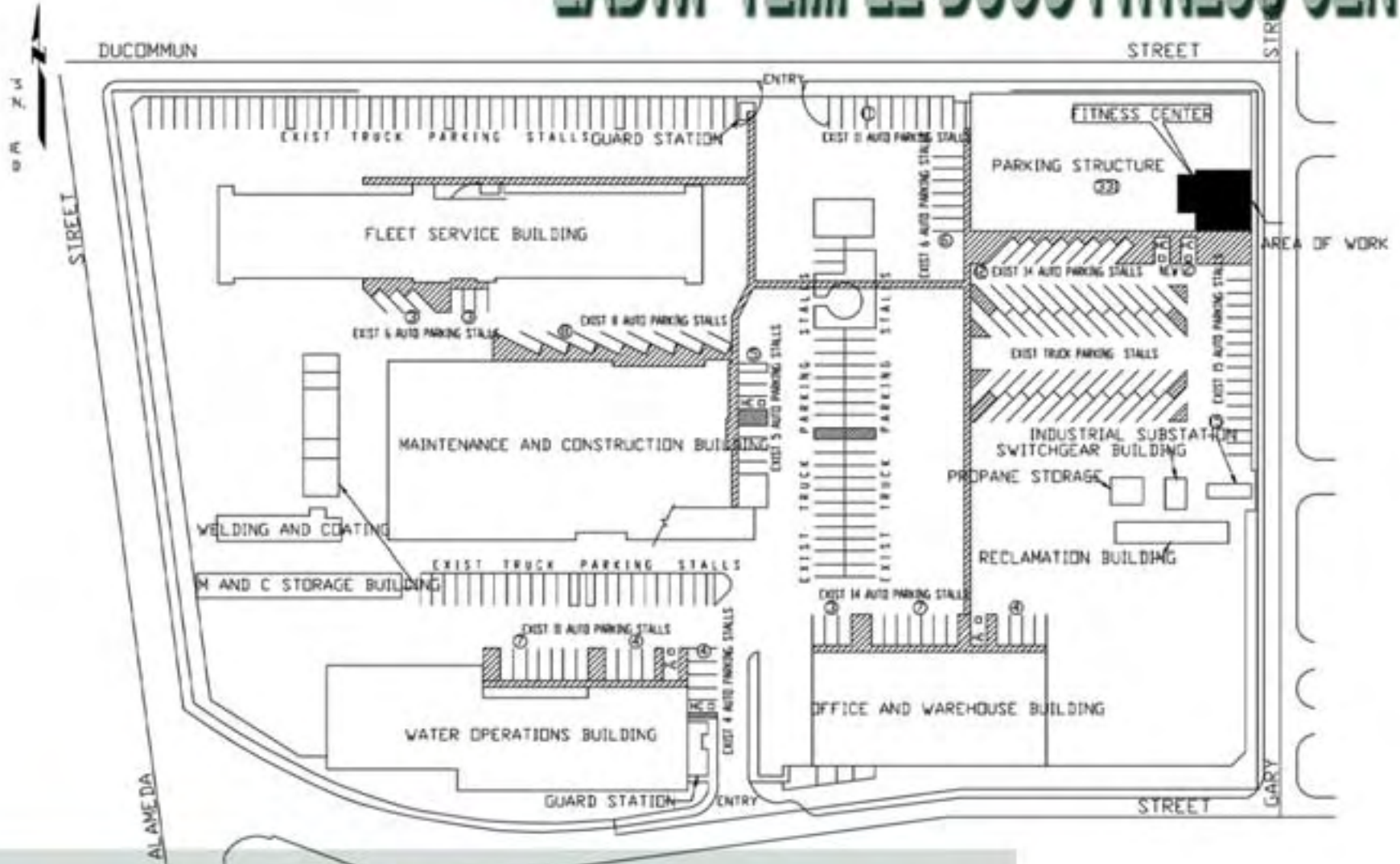
2005 3 24



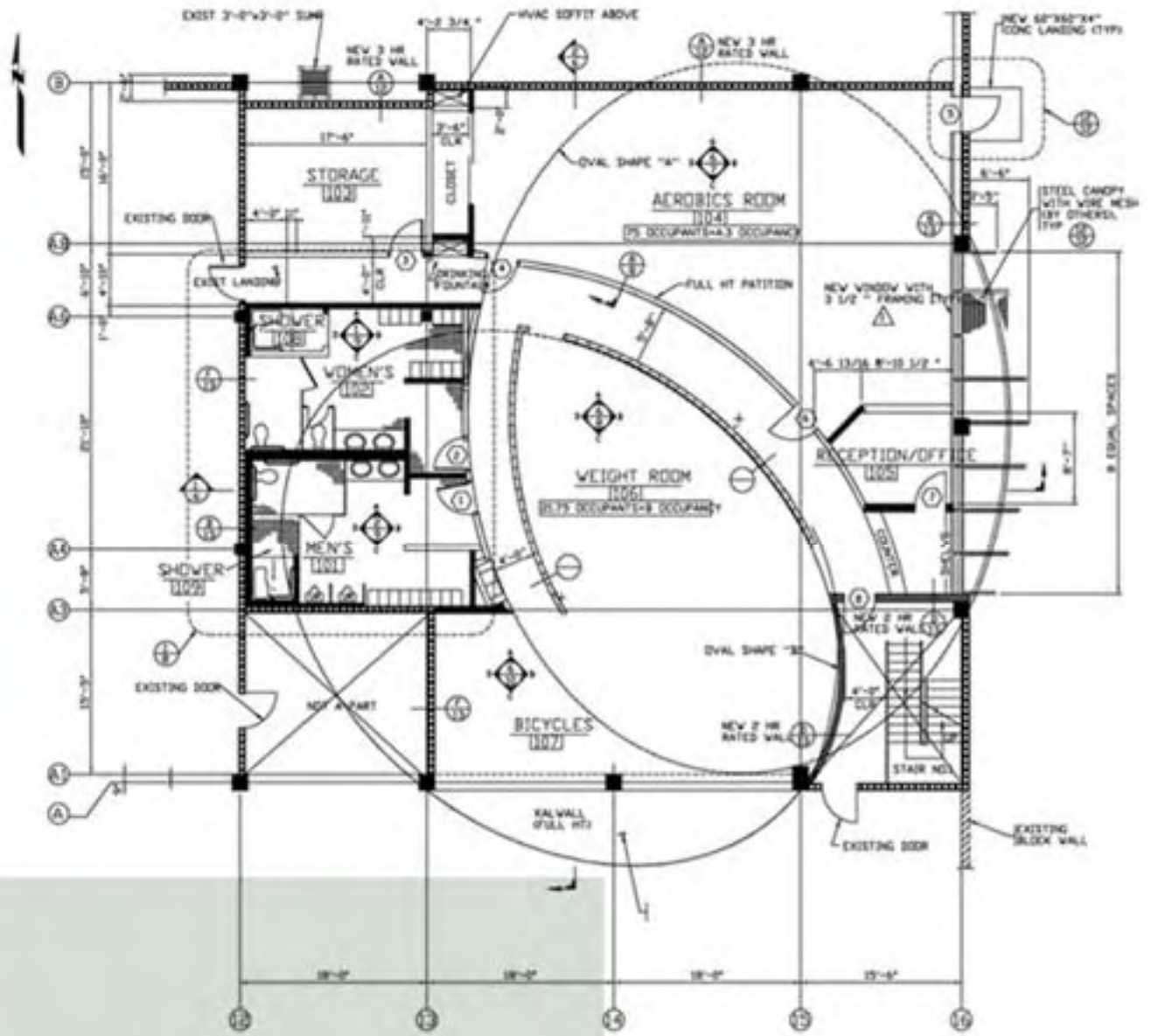




# LADWP TEMPLE-DUCO FITNESS CENTER

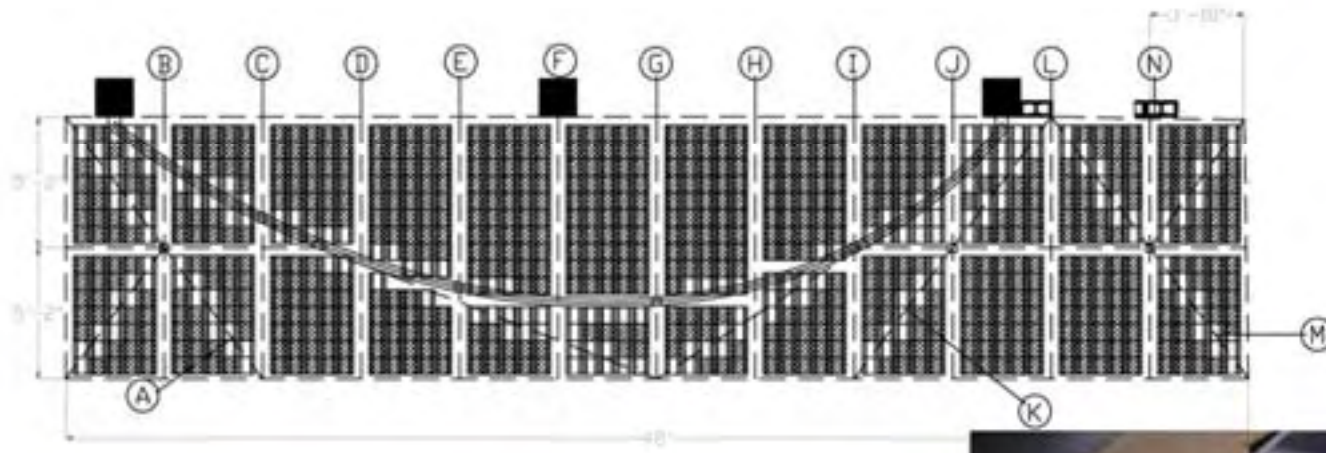
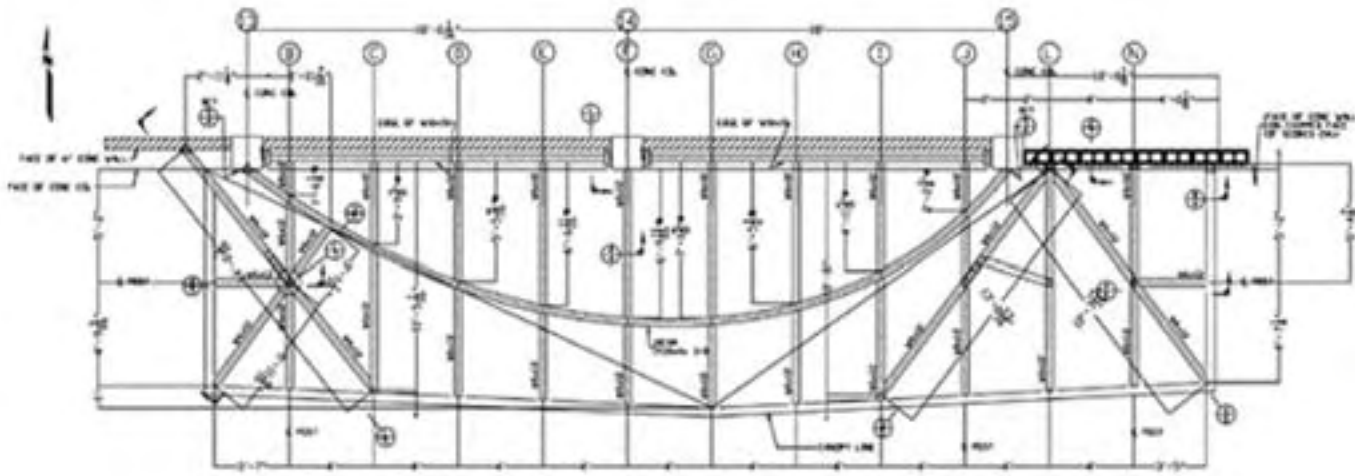






PARTIAL FLOOR PLAN













10 1:55 PM







WATER & POWER  
P98-62

LADWP  
WATER

LADWP  
WATER

LADWP  
WATER

LADWP  
WATER

































# Distributing Station 73









# Institutional Projects



Architect: Bohlin Cywinski Jackson

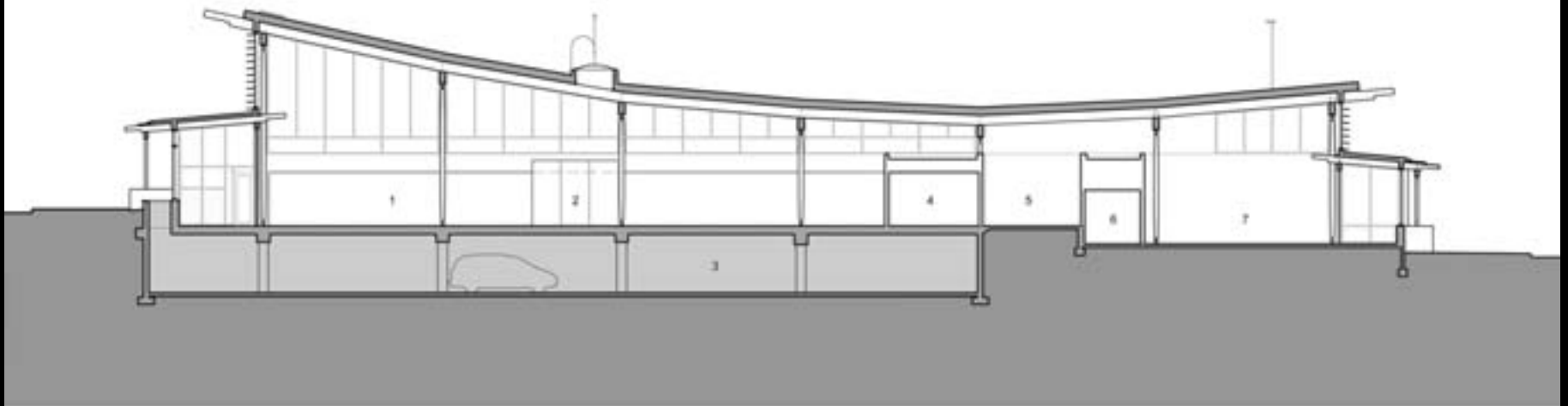
Location: Seattle, Washington

Year Completed: 2005



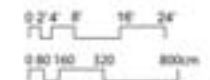


West Elevation



- 1 collections
- 2 quiet room
- 3 parking garage
- 4 office
- 5 library staff
- 6 service
- 7 neighborhood service center

North-South Section



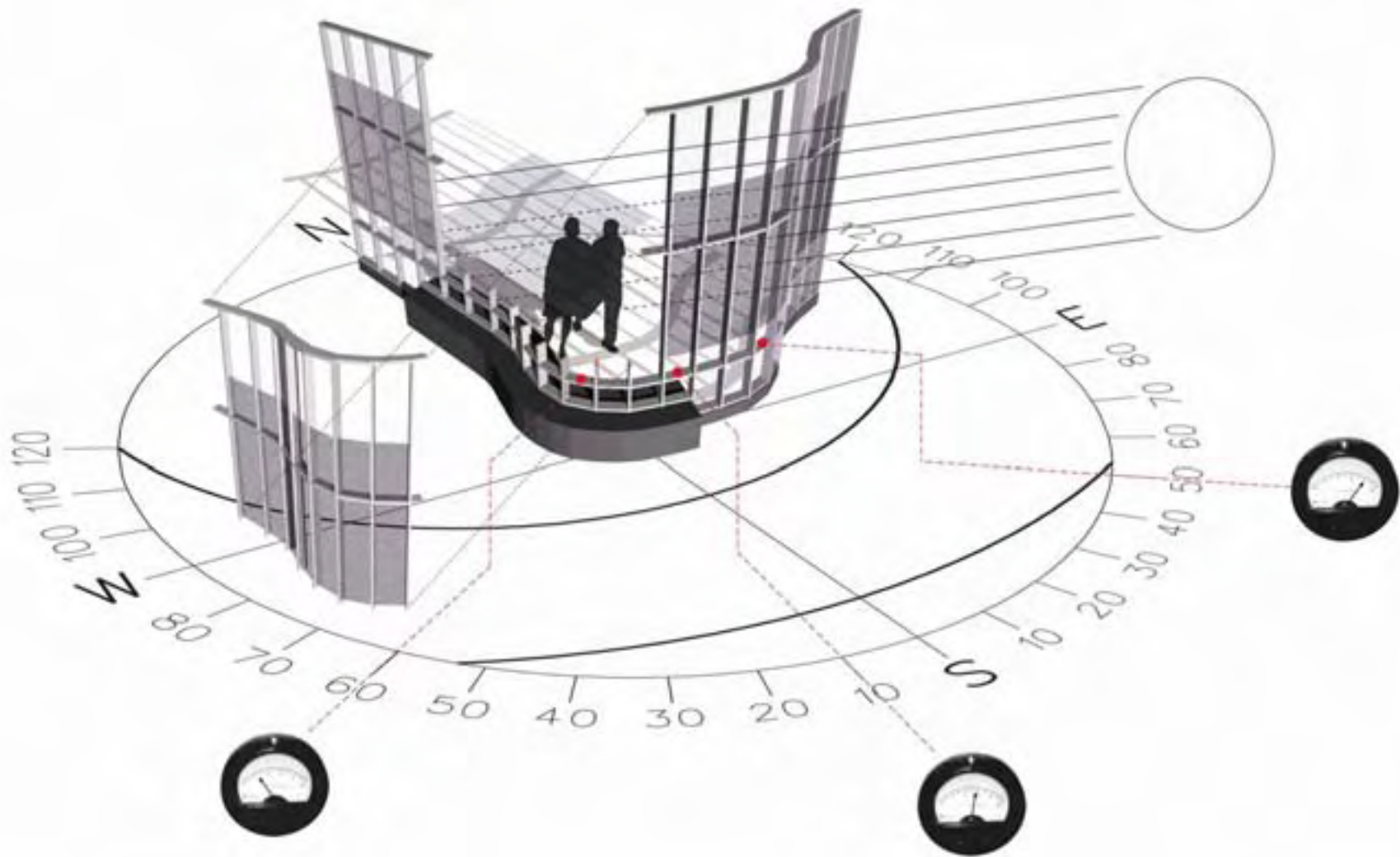


Image: © Bohlin Cywinski Jackson





Image: © Nic Lehoux



Image: © Nic Lehoux



Image: © Nic Lehoux



Image: © Nic Lehoux





Image: © Nic Lehoux



Image: © Nic Lehoux



Image: © Nic Lehoux





Image: © Nic Lehoux



Image: © Bohlin Cywinski Jackson





Image: © Nic Lehoux



Image: © Nic Lehoux



# CalTrans Headquarters Building, Los Angeles

Architect: Morphosis











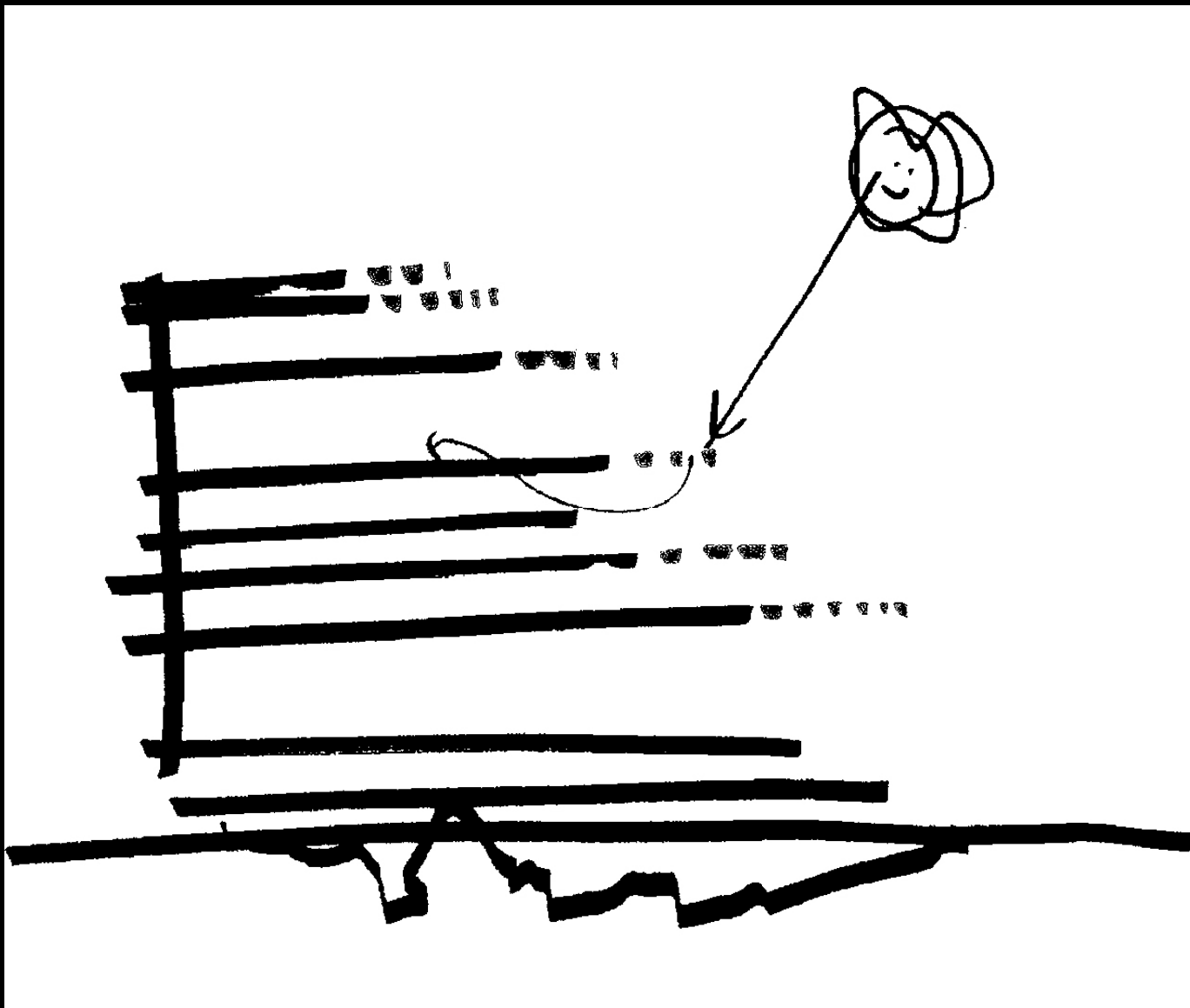








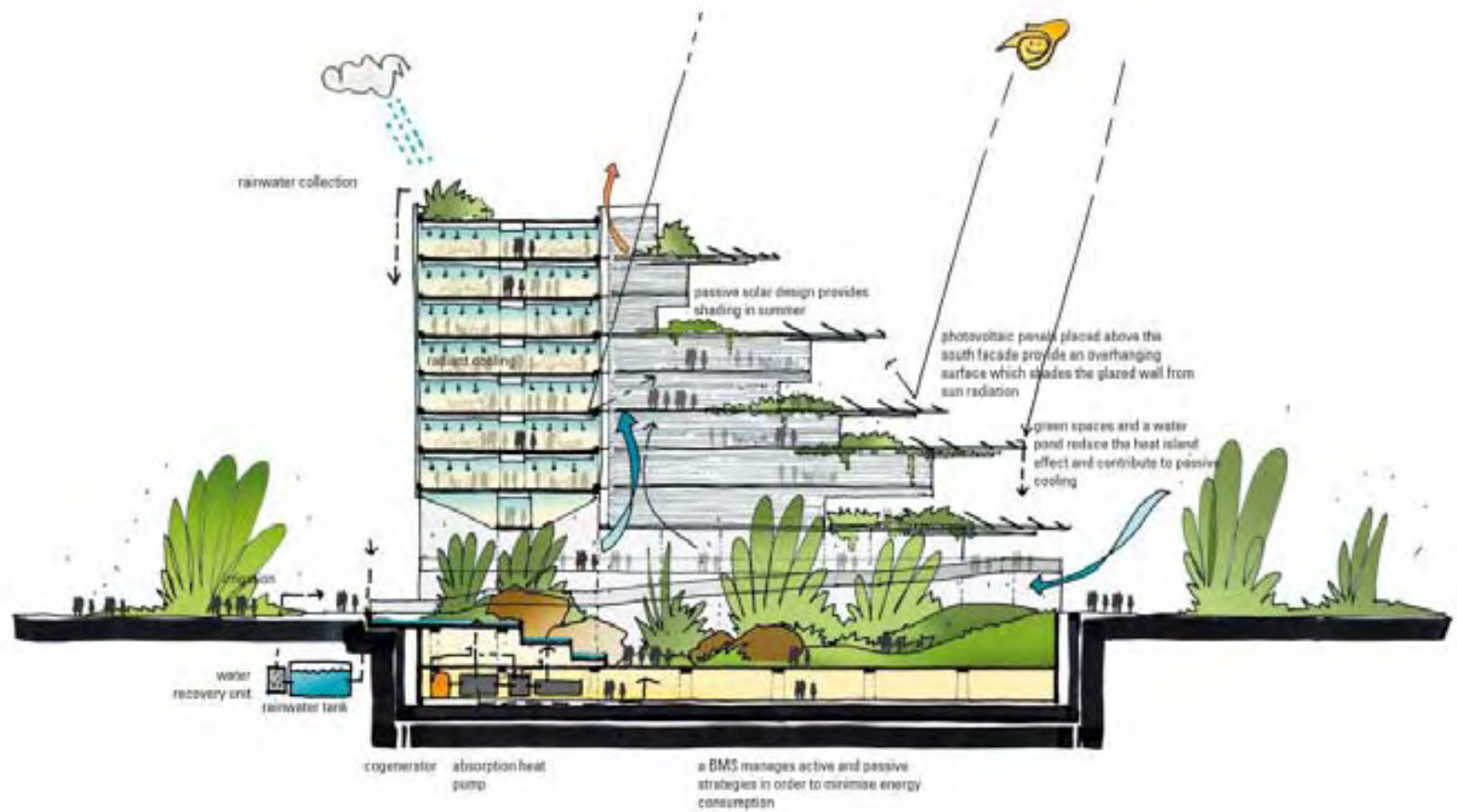




Sino-Italian Ecological and Energy Efficient Building

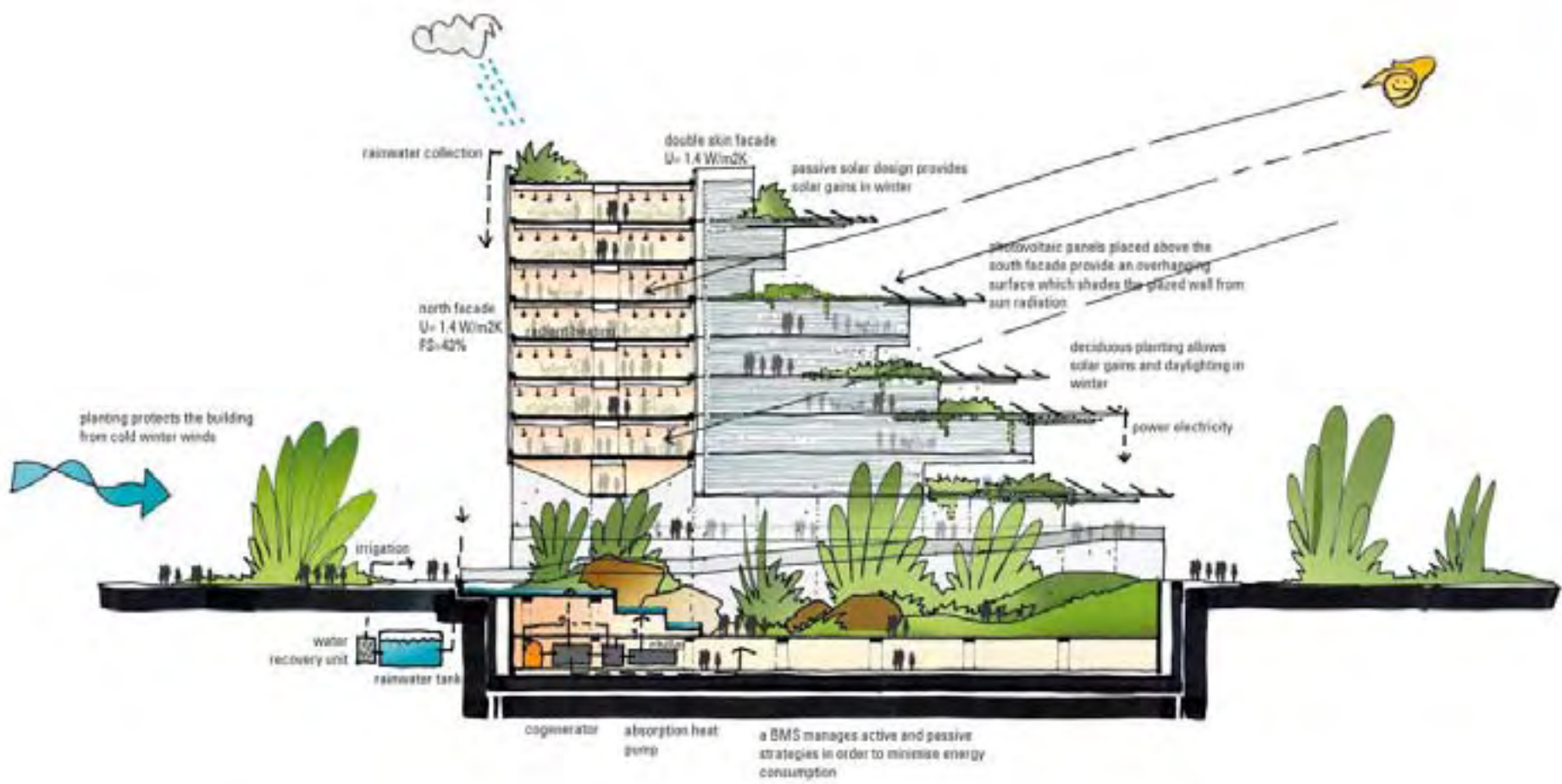
Architect: Mario Cucinella Architects

Location: Beijing, China



summer





winter



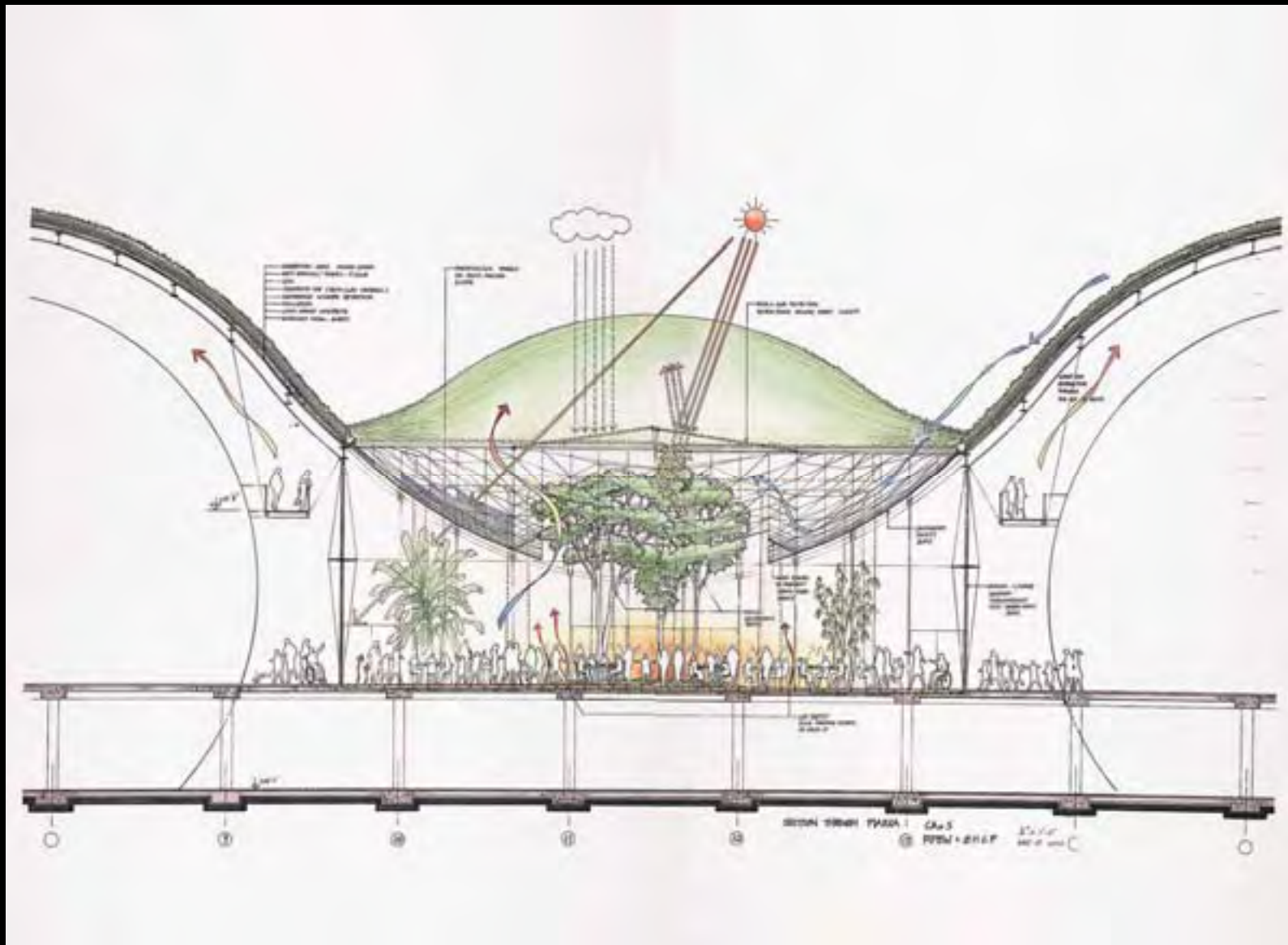












California Academy of Sciences

Architect: Renzo Piano

Location: San Francisco, California























# Multi-Family Residential



# Amersfoort, Holland



















Colorado Court Affordable Housing

Architect: Pugh + Scarpa Architects

Location: Venice, California













The Union

Architect: Jonathan Segal Architect + Development

Location: San Diego, California

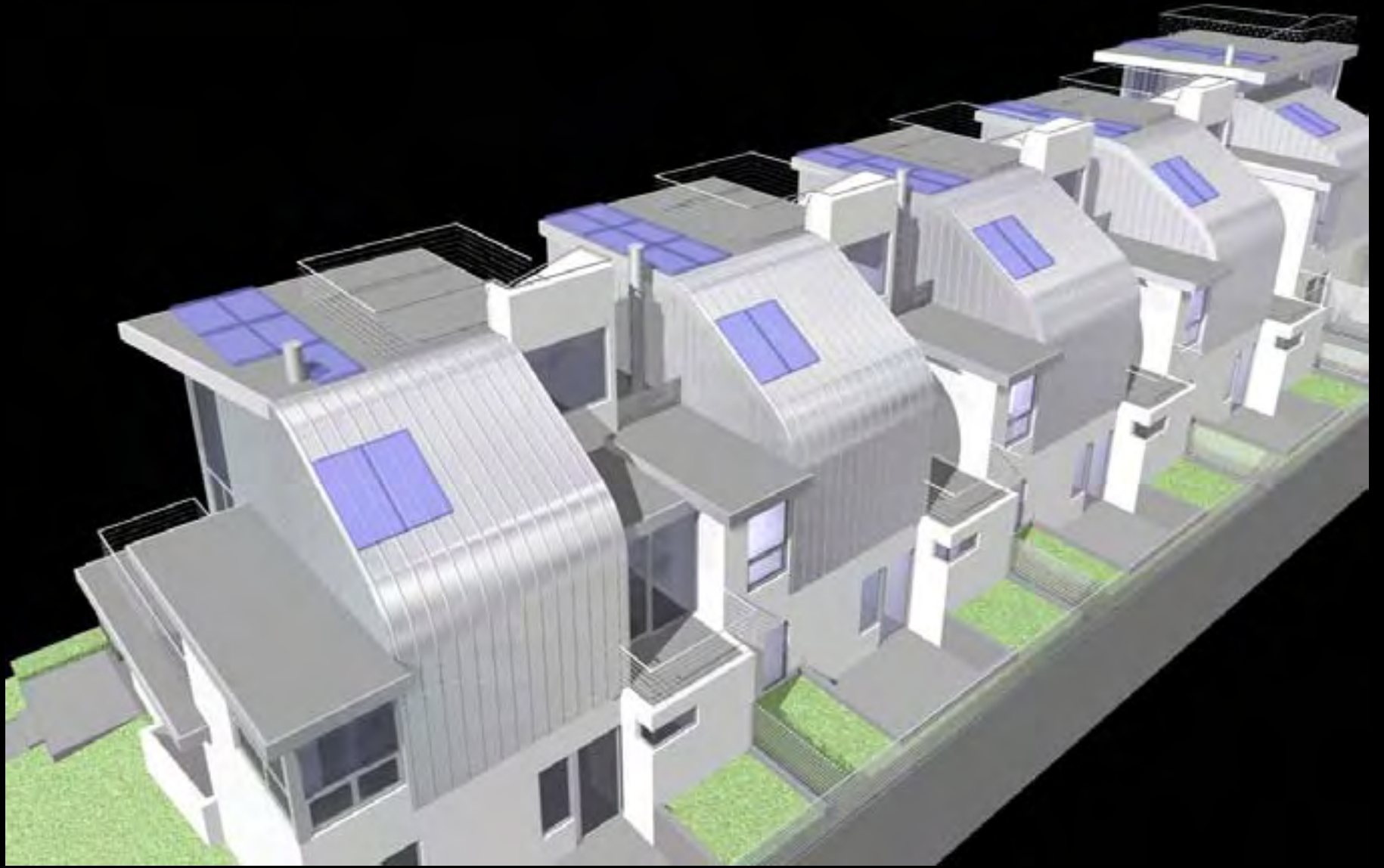


Architect: Jesse Bornstein Architects

Location: Santa Monica, CA

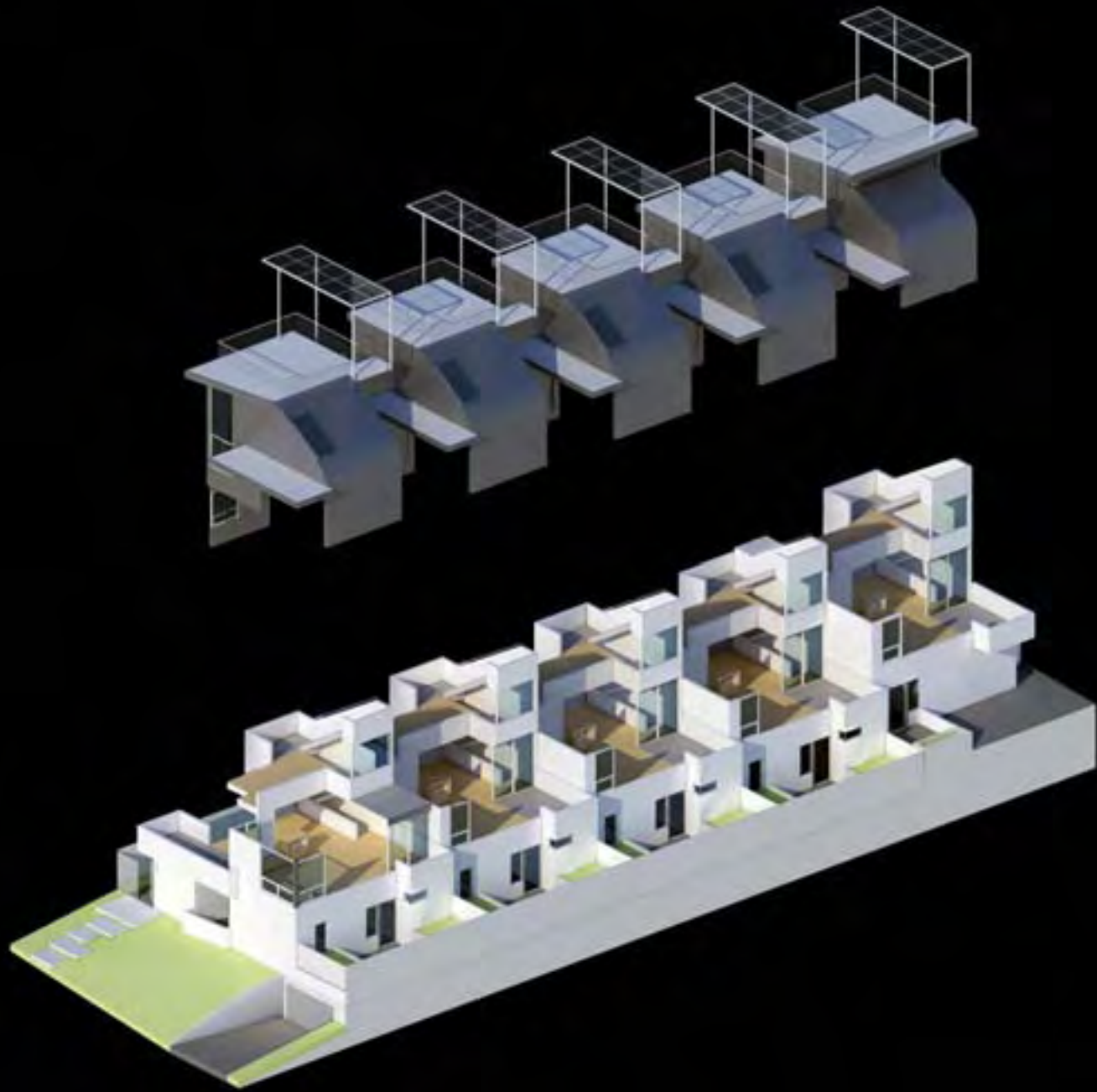
Year Completed: 2008





























Architect: Rolf Disch SolarArchitektur

Location: Freiburg, Germany

Year Completed: 2004



















# Single-Family Residential: Solar Tracking



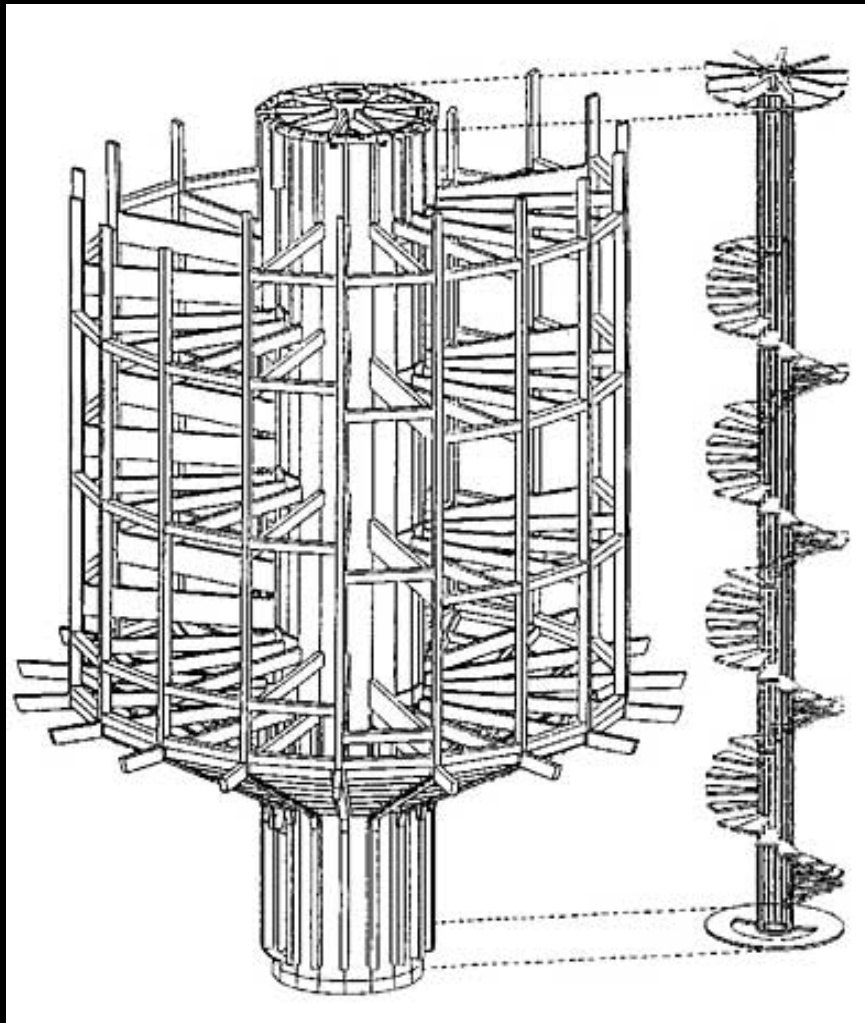
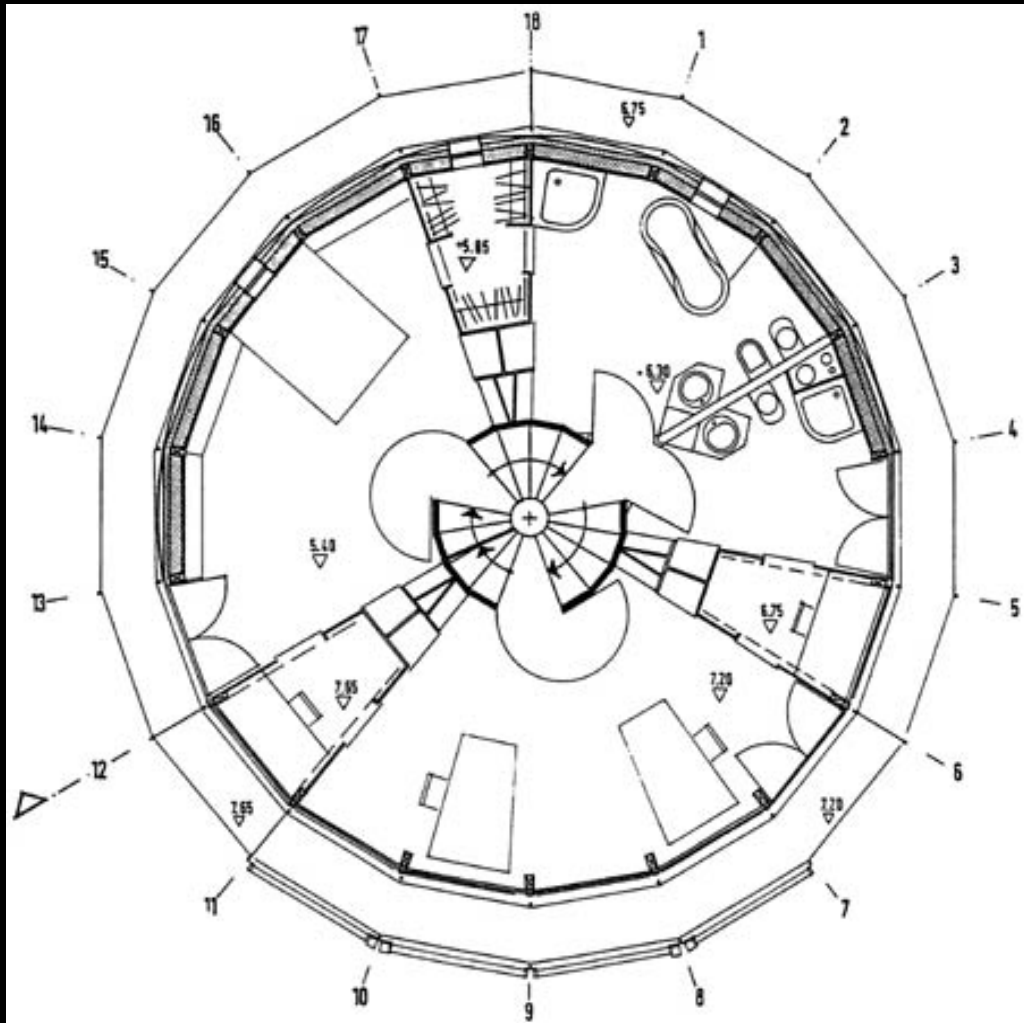
Heliotrop

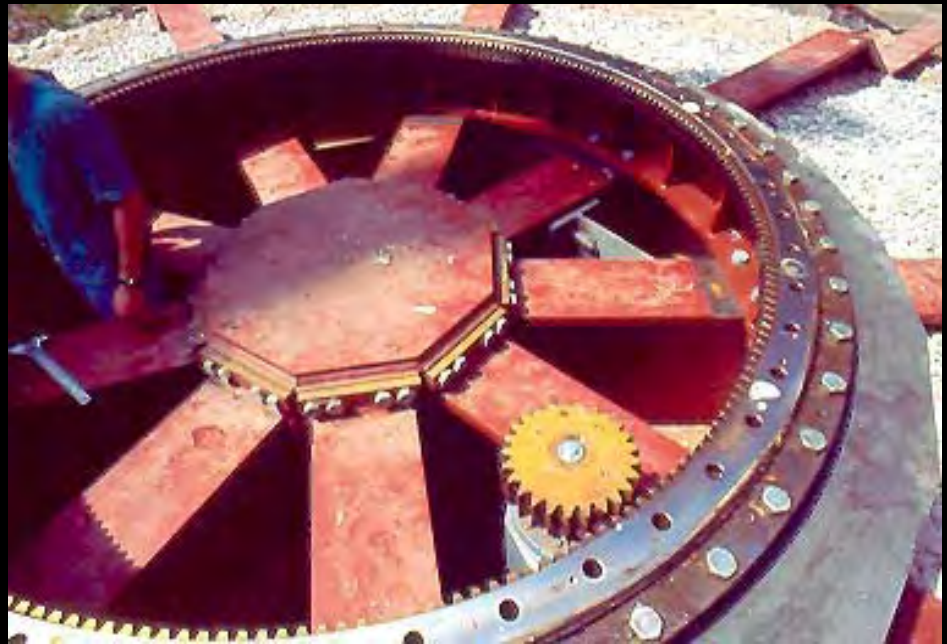
Architect: Rolf Disch SolarArchitektur

Location: Freiburg, Germany













Gemini Haus

Designer: Roland Mosl

Location: Weiz, Austria





# Single-Family Residential: Translucent Modules



2009 New American Home

Architect: Danielian Associates

Location: Las Vegas, Nevada

