

MARRYING ART & ARCHITECTURE:

HOW THE PERCEPTION OF PLACE IS BENEFITED BY SITE-SPECIFIC ART



**A PANEL DISCUSSION
MODERATED BY FREDERICK FISHER,
FREDERICK FISHER AND PARTNERS ARCHITECTS**



ATA Los Angeles

A Chapter of the American Institute of Architects

AIA Los Angeles is a Registered Provider with The American Institute of Architects Continuing Education Systems. Credit earned on completion of this program will be reported to CES Records for AIA members. Certificates of Completion for non-AIA members are available on request.

This program is registered with the AIA/CES for continuing professional education. As such, it does not include content that may be deemed or construed to be an approval or endorsement by the AIA of any material of construction or any method or manner of handling, using, distributing, or dealing in any material or product. Questions related to specific materials, methods, and services will be addressed at the conclusion of this presentation.



COPYRIGHT MATERIAL

This presentation is protected by US and International Copyright laws. Reproduction, distribution, display and use of the presentation without written permission of the speaker is prohibited.

© AIA Los Angeles 2009



ATA Los Angeles

A Chapter of the American Institute of Architects

LEARNING OBJECTIVES

- 1) Participants gain an understanding of the **process of working on site-specific art** for their projects.
- 2) Participants are educated on the **potential value** that site-specific art and artist collaboration can add to their projects.
- 3) Participants have an opportunity to **learn about fabrication and delivery** of major art commissions from the top fabricator in the business.
- 4) Participants **gain insight on real world experiences** by different players in the process, and have the opportunity to ask questions specific to their personal job applications.



FREDERICK FISHER - Architect











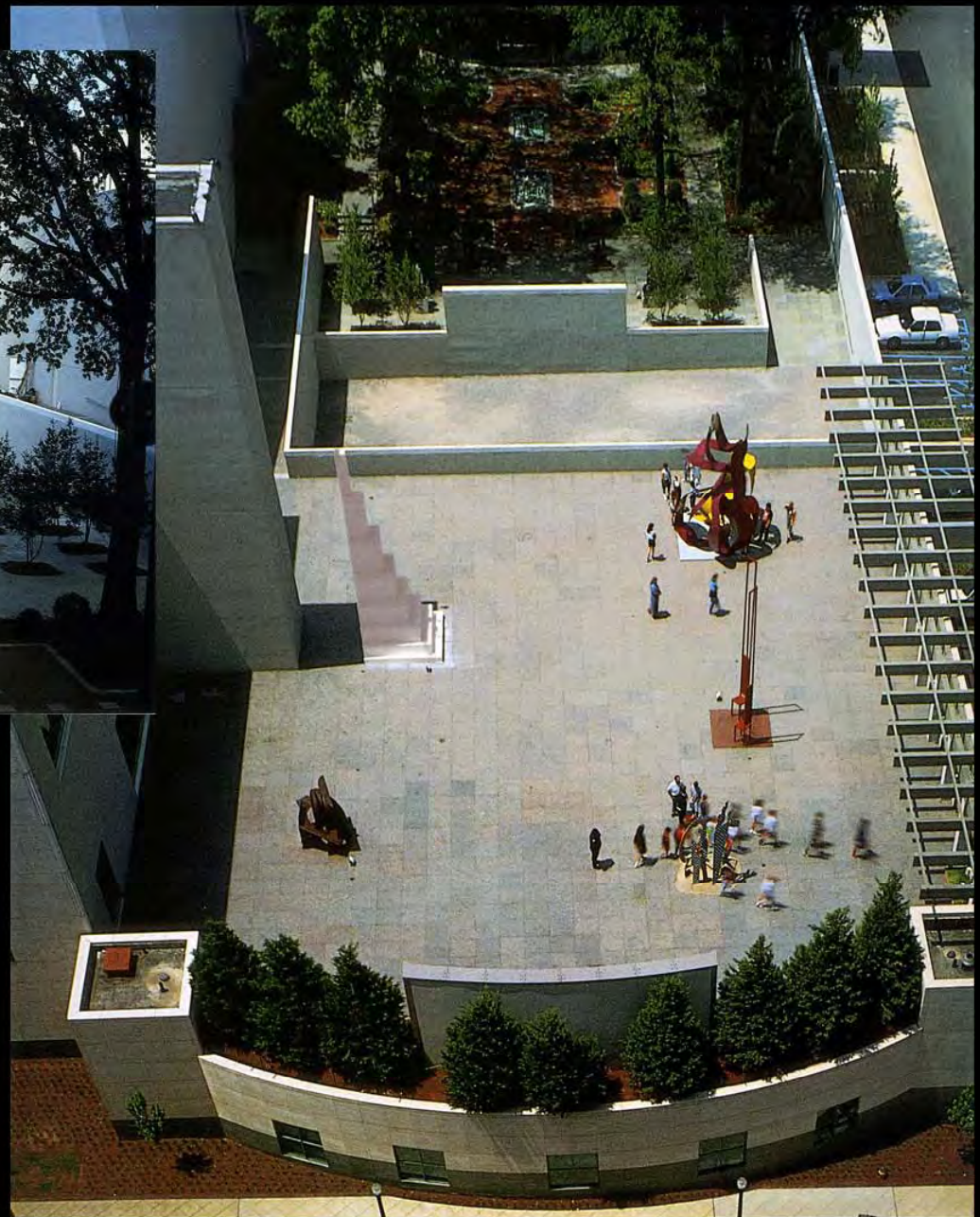


First Market Plaza, San Francisco, 1991



ELYN ZIMMERMAN - Artist

Charles Ireland Sculpture Garden, Birmingham Museum of Art, Birmingham, Alabama, 1994



World Trade Center Memorial, New York, 1995



Nkuanyiko wa Marifiki (Circle of Friends), Dar es Salaam, Tanzania, 2003



Watercourse at Bentall V, Vancouver, British Columbia, 2008



Suspended Arcs & Sections, Beijing Olympic Park, 2008



Cavala Park, New York, 2009



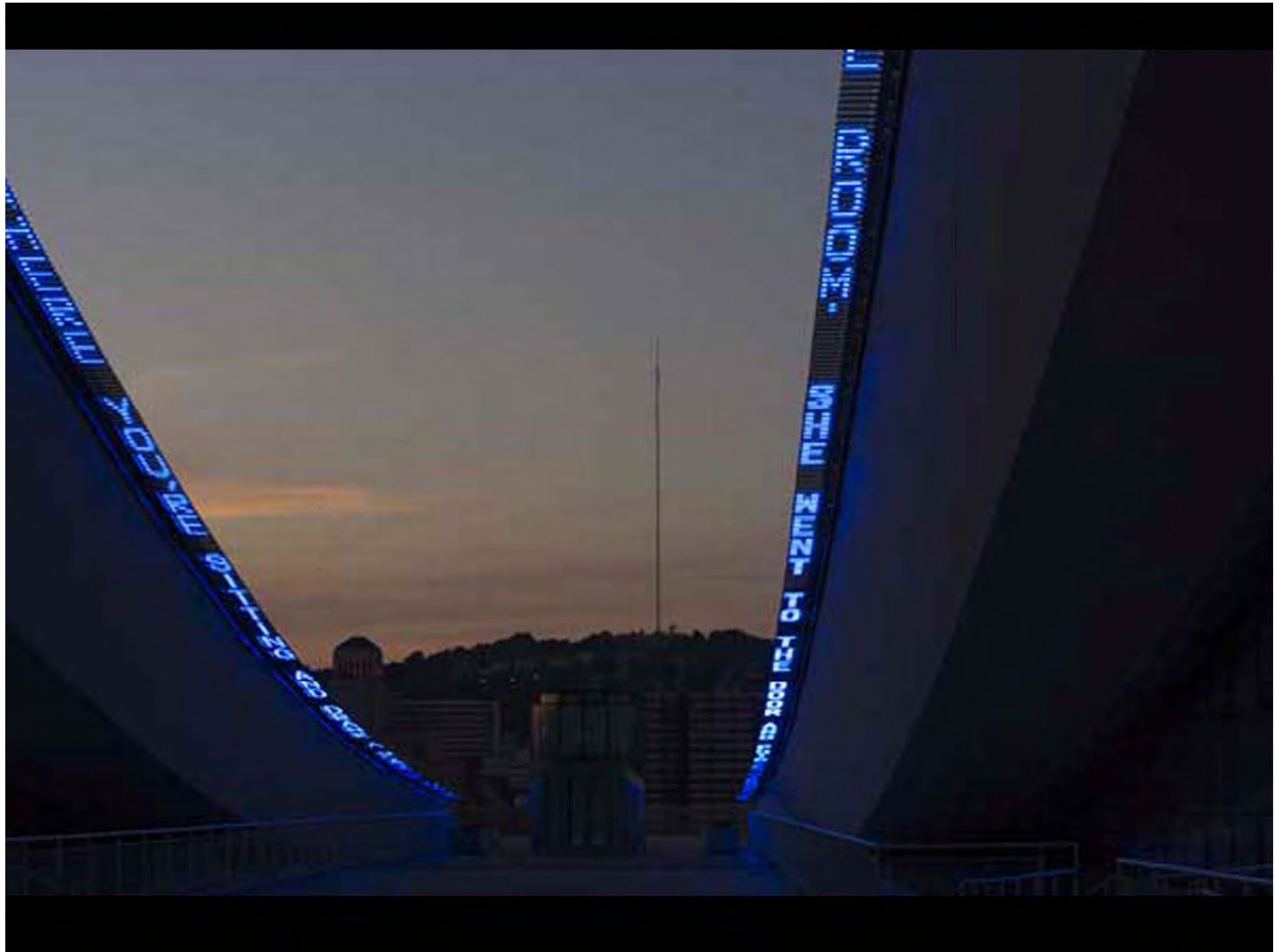


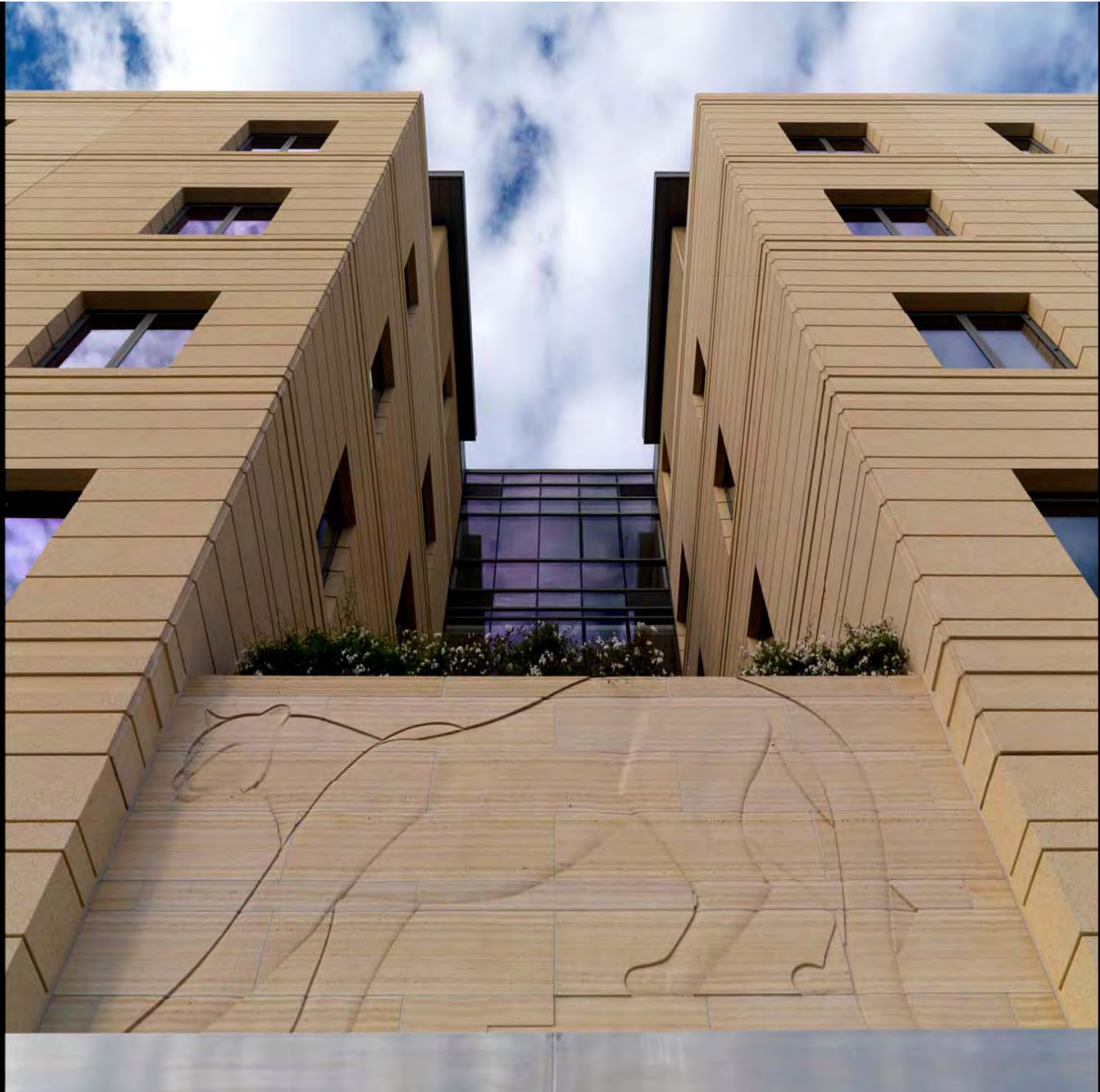
MARC PALLY – Artist & Public Art Consultant













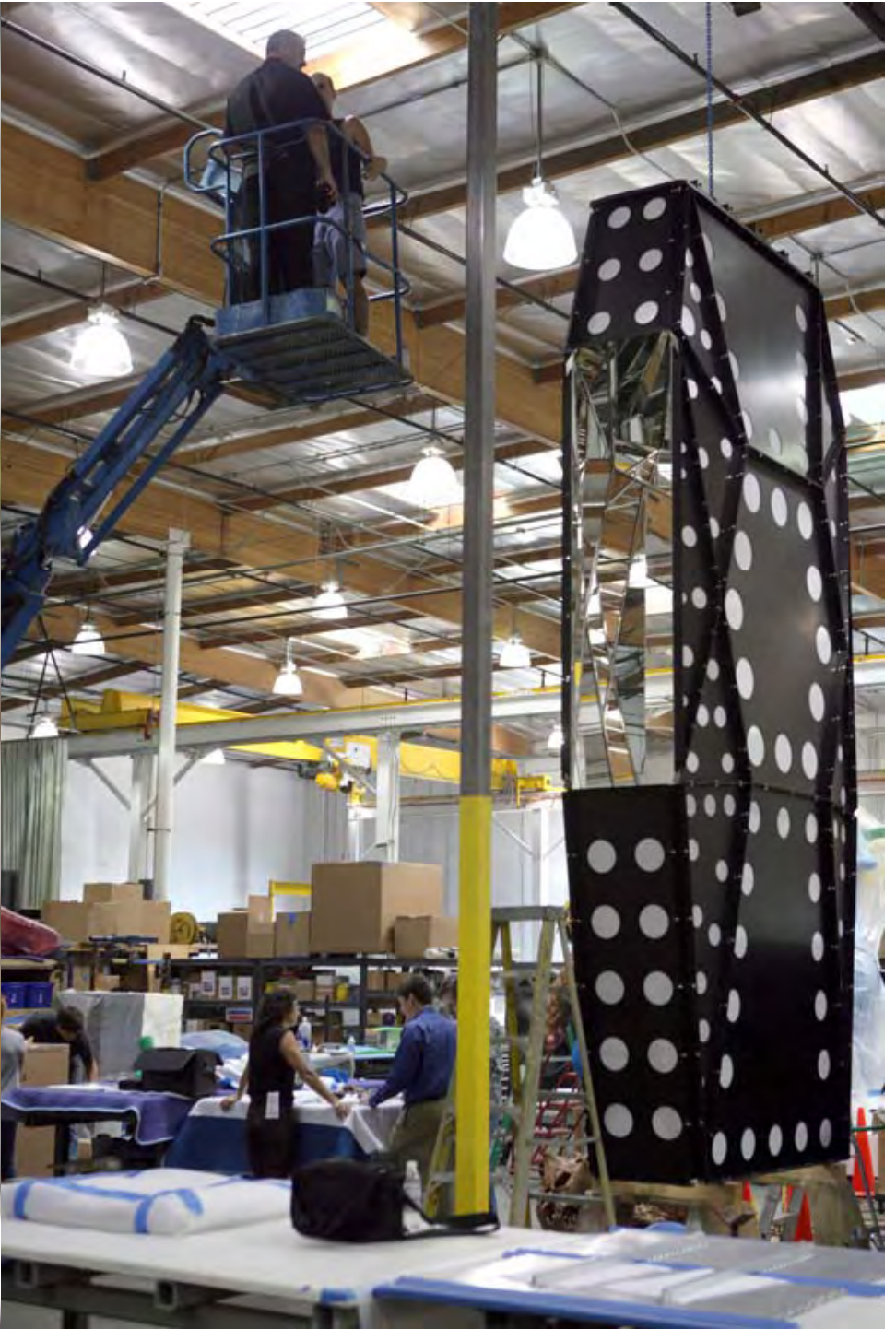


ED SUMAN– Carlson & Company, Art Fabricators











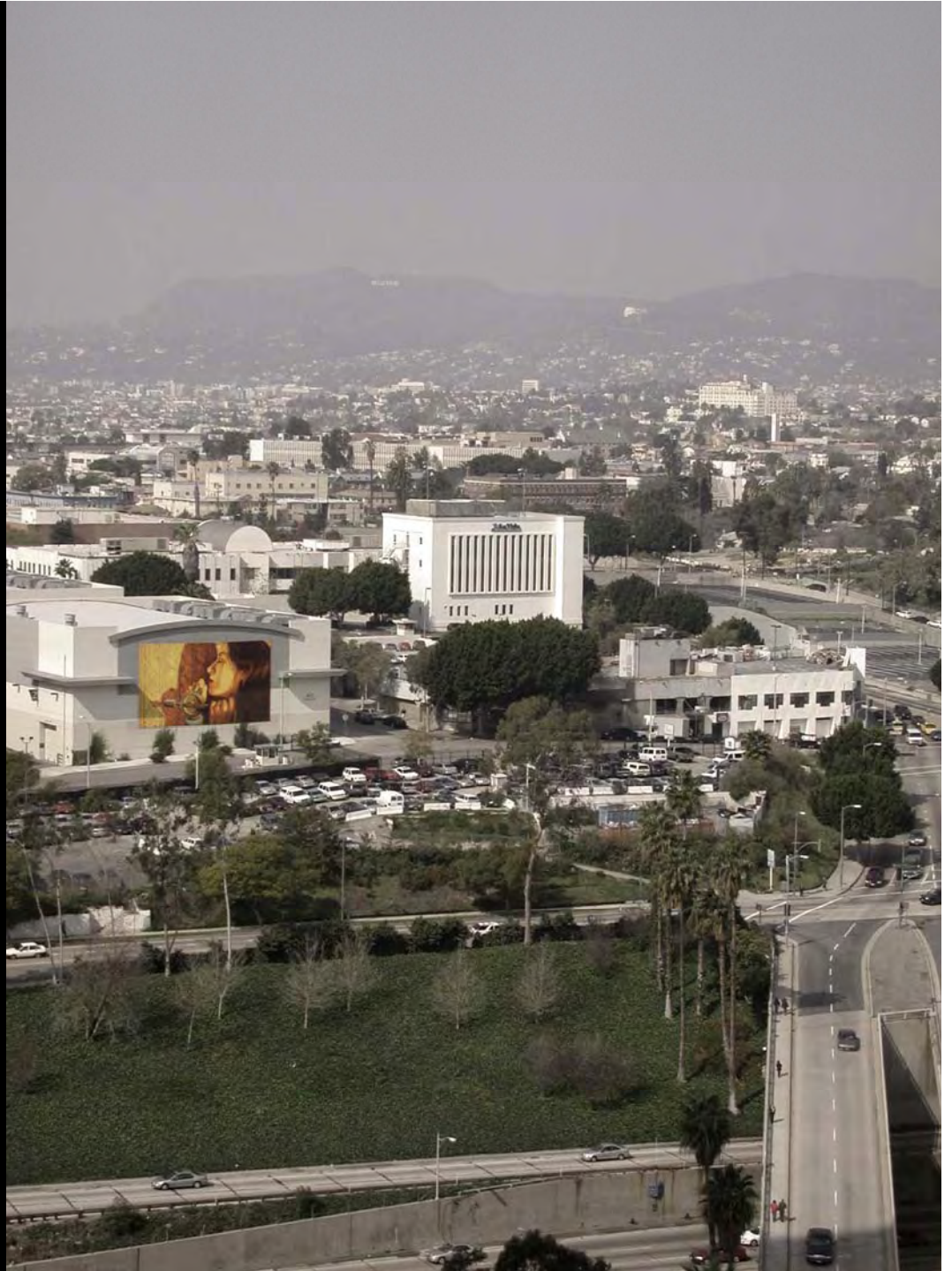


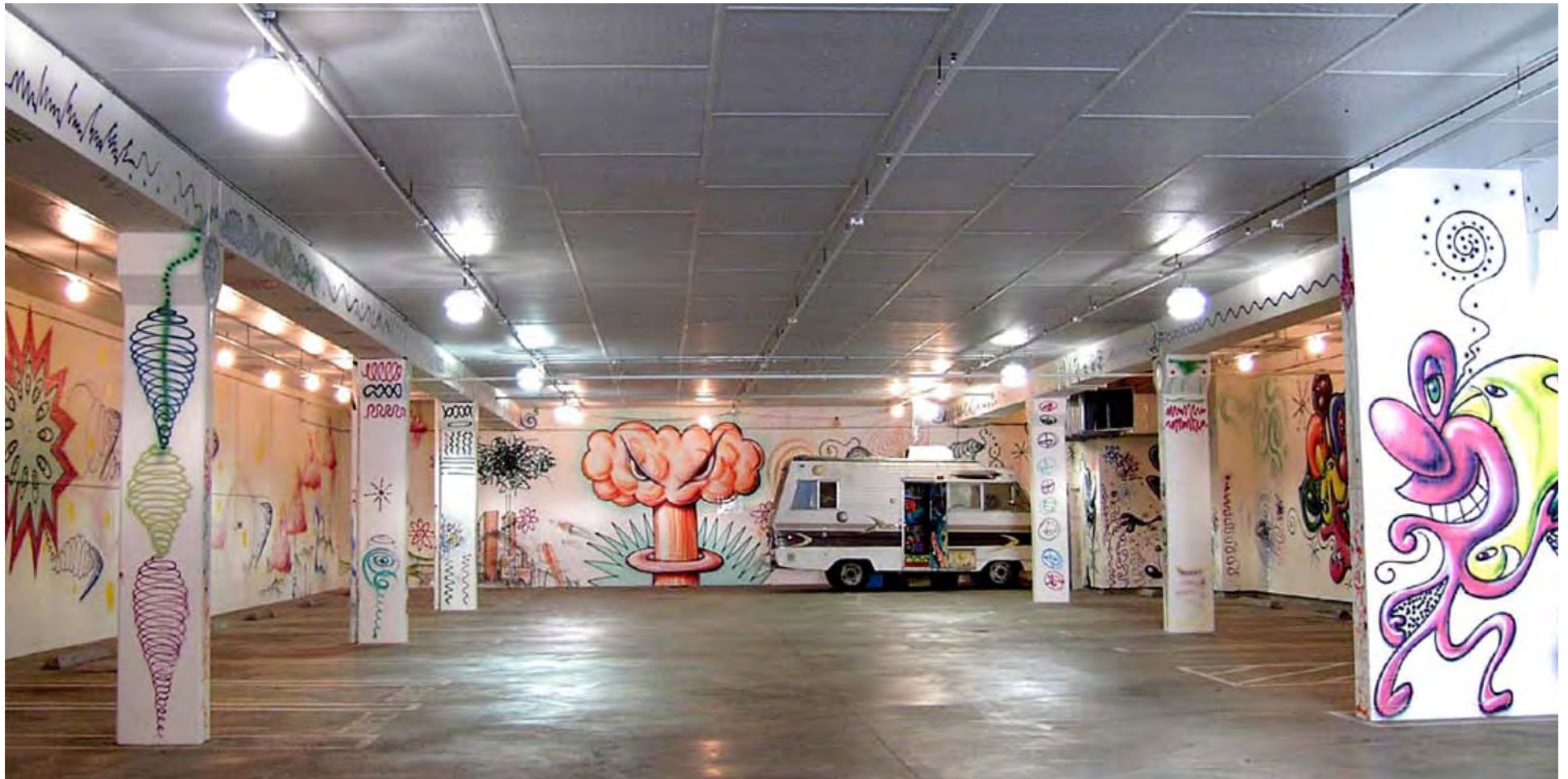


MERRY NORRIS, Hon. AIA/LA – Merry Norris Contemporary Art, Art Consultant

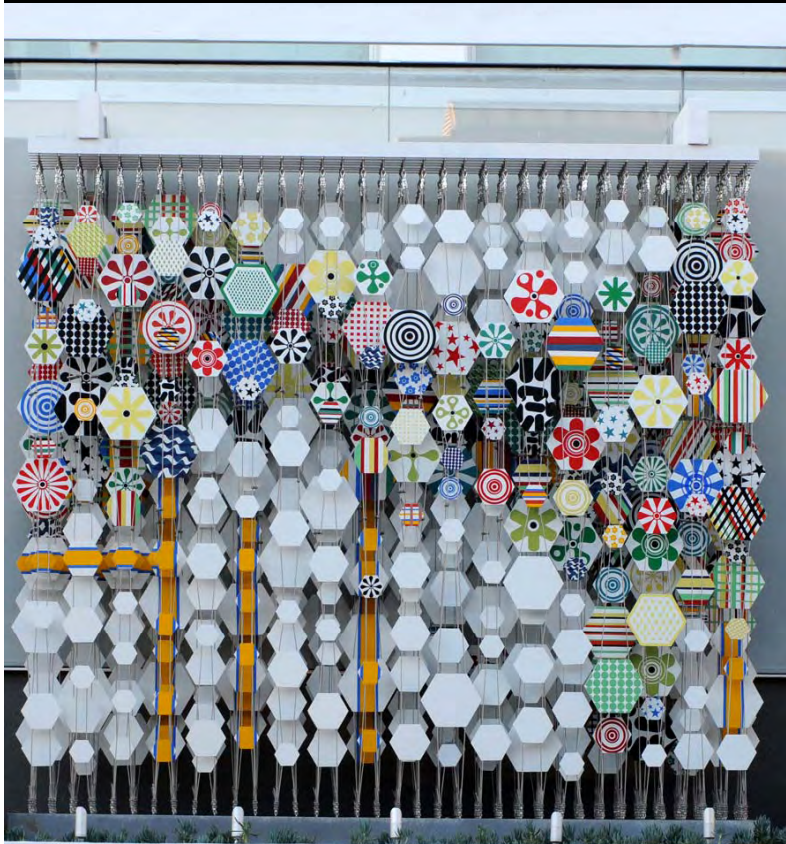














This concludes the American Institute of Architects Continuing Education System Program

Thank you for your time!

**Please refer additional questions
to the address below:**



ATA Los Angeles

A Chapter of the American Institute of Architects

**3780 Wilshire Boulevard, Suite 800
Los Angeles, California 90010
213.639.0777**

www.aialosangeles.org | info@aialosangeles.org