

**FORM**  
PIONEERING DESIGN

09

**M**  **BIUS** | **A**

**AIA LOS ANGELES**  
**June 25 – 27, 2009**



**AIA Los Angeles**  
A Chapter of the American Institute of Architects

The New AECOM:

The operating entities that have made up AECOM's North American operations are now five integrated business lines.

A common commitment:

- Our professionals who have served our clients have not changed
- Our focus on quality has not changed
- Our commitment to professional development has not changed
- We are AECOM

AECOM

To discover more visit us at [www.aecom.com](http://www.aecom.com).

AECOM Design

AECOM Energy

AECOM Environment

AECOM Transportation

AECOM Water



## WELCOME TO MOBIUS LA 2009!

On behalf of the AIA Los Angeles Board of Directors, Members, and Staff — welcome all to MOBIUS LA 2009! We are very excited to hold our 3rd annual design conference and to be partnered with Dwell in conjunction with DWELL ON DESIGN. Our joint conference will take place June 25 – 28 at the Los Angeles Convention Center. MOBIUS LA will begin on June 25th, one day prior to the official opening of DWELL ON DESIGN on June 26th.

Launched in 2007, MOBIUS LA creates an opportunity for AIA/LA members and others to earn required continuing education without traveling beyond the Los Angeles region. As a result of the partnership with DWELL ON DESIGN, we have expanded our curriculum to include subjects that we hope will be engaging not only to professionals, but to all enthusiasts of architecture and design.



The open exchange of ideas between the public and design professional is instrumental in advancing the major theme that has emerged during my tenure as President of AIA/LA: architecture and design matters. And the platform provided by MOBIUS LA facilitates these meaningful dialogues.

MOBIUS LA at DWELL ON DESIGN will also host the fifth annual AIA/LA Restaurant Design Awards, which celebrate excellence in the design of restaurants, cafés, bars, lounges, and nightclubs nationwide. The Awards ceremony — always a great and tasteful time — will take place Friday June 26, 2009.

AIA Los Angeles could not accomplish all that it does without the generous support of Los Angeles' design community. We are very fortunate to have AECOM as the MOBIUS LA 2009 Presenting Sponsor and to recognize FORM Magazine as our Community Partner.

I look forward to completing my continuing education requirements, enjoying the exhibits and engaging many of you in interesting dialogues in late June at the Los Angeles Convention Center. AIA/LA looks forward to joining all of you at the 2009 MOBIUS LA at DWELL ON DESIGN conference.

Very truly yours,

**JOHN E. KALISKI, AIA**

2009 President, AIA/LA Board of Directors

# MOBIUS LA 2009

One Place. One Event.  
All of your Continuing Education Units.

Thursday June 25 – Saturday June 27  
Los Angeles Convention Center, South Hall

## Registration Now Open

at [www.aialosangeles.org](http://www.aialosangeles.org)

For more detailed class descriptions & presenter bios, visit [www.aialosangeles.org](http://www.aialosangeles.org)

## PRICING & REGISTRATION

REGISTRATION DATE	Early Bird NOW-6/5	Regular 6/6-6/24	On-Site 6/25-6/27
1-Day Pass	\$125 AIA Members \$225 Non-Members	\$150 AIA Members \$250 Non-Members	\$200 AIA Members \$300 Non-Members
2-Day Pass	\$175 AIA Members \$275 Non-Members	\$200 AIA Members \$300 Non-Members	\$250 AIA Members \$350 Non-Members
3-Day Pass	\$225 AIA Members \$325 Non-Members	\$250 AIA Members \$350 Non-Members	\$300 AIA Members \$400 Non-Members

Thursday, June 25

### 9:15 am–12:30 pm

**STEPPING THRU ACCESSIBILITY FOR NEW PUBLIC & PRIVATE COMMERCIAL BUILDINGS PER CBC & ADA** (3.0 HSW LU – also offers certificates to fulfill SB 1608, the ADA mandatory continuing education requirement for license renewal with the California Architects Board)

*Janis Kent, AIA – Perkowitz + Ruth*

An overview of accessibility items will be addressed on California public and private commercial projects from beginning to end on both ADA and CBC.

### **BIM, THE LAW, AND THE REVOLUTION IN PROJECT DELIVERY** (3.0 LU)

*Doug Childers, AIA – Morris Architects*  
*Dr. David Gerber – Gehry Technologies, Inc.*  
*Rob H. Shaffer Jr. – Zetlin & De Chiara LLP*  
*Christof Spieler, P.E. – Morris Architects*  
*Robert Vanech – Cadforce*

BIM promises to change the way we've been designing, documenting, and building projects for a century. Learn how contracts and software are enabling collaborative teams.

### LUNCH BREAK 12:30PM-1:45PM

### 1:45 pm–5:00 pm

### **TROUBLE SPOTS IN THE 2007 CBC: THE TOP TEN CODE ISSUES ENCOUNTERED DURING DRAWING REVIEWS** (3.0 HSW LU)

*Nate Wittasek, P.E., LEED AP – ARUP*

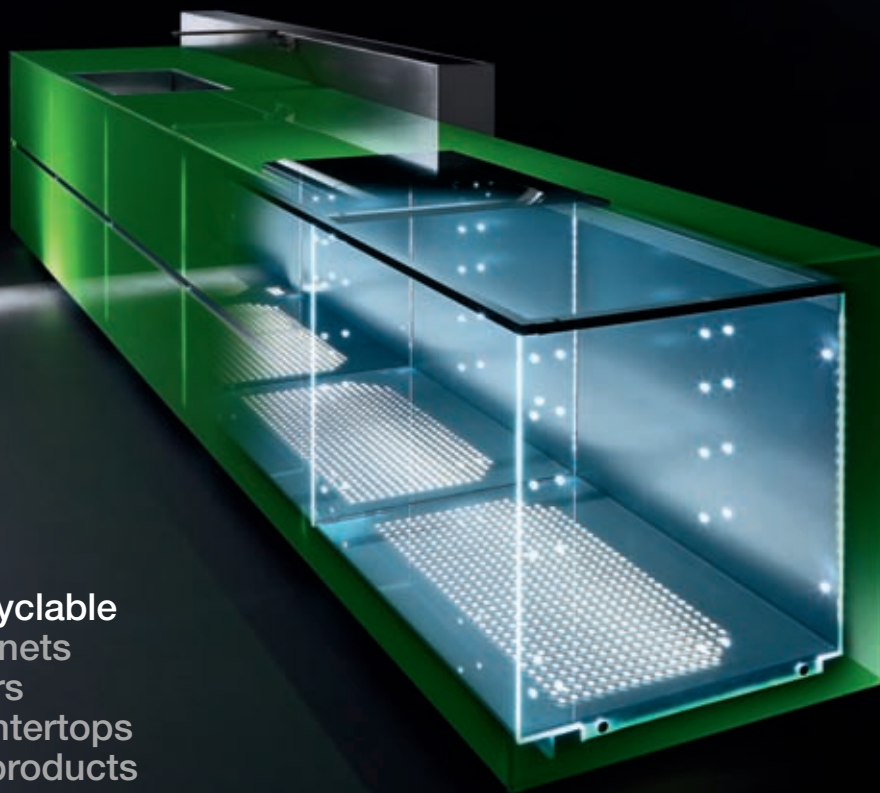
Provisions of the 2007 CBC that cause the most confusion to designers.

### **HOW TO PROTECT YOURSELF AND GET PAID** (3.0 LU)

*John V. Hogan IV, Esq. – Collins Collins Muir + Stewart LLP*  
*Robert H. Stellwagen, Esq. – Collins Collins Muir + Stewart LLP*

In today's economy, it is extremely important to negotiate a better contract that ultimately will assist you in increasing your chances of getting paid!

Dates, times, classes, conference events, program subject matter, instructors, panelists and fees are subject to change, without notice, at any time at the sole and absolute discretion of AIA/LA. Further, AIA/LA reserves the right to cancel any classes where the minimum number of pre-registration registrants is not met. If such a cancellation occurs, registrants will be notified and given the opportunity to select an alternate and comparable class to attend.



**100% Recyclable**  
Glass cabinets  
Glass doors  
Glass countertops  
No wood products  
No formaldehyde emissions  
Easy to assemble and disassemble  
**A revolution in kitchen construction**

design: Gabriele Centazzo [www.valcucine.it](http://www.valcucine.it)



**DOM LOS ANGELES**

9030 Wilshire Boulevard, **Beverly Hills**, CA 90211  
T 310-246-9790 F 310-246-9733  
[www.domshowrooms.com](http://www.domshowrooms.com)

**9:15 AM–10:45 AM****WHAT EVERY ARCHITECT NEEDS TO KNOW ABOUT  
IDM'S, MEDIATION AND ARBITRATION!** (1.5 LU)

*Michael R. Powell – American Arbitration Association*  
*Edward K. Takahashi, FAIA – Edward K. Takahashi*  
*Architectural Corporation*  
*Chester A. Widom, FAIA – WWCOT*

There are risks in all projects. When it comes to dispute resolution, you need to know the risks of not choosing AAA arbitration in the AIA form contracts.

**PRESERVATION DESIGN IS SUSTAINABILITY:  
SUSTAINING HISTORICAL AND ENVIRONMENTAL  
INTEGRITY IN HISTORIC DISTRICTS**  
(1.5 HSW/SUSTAINABLE DESIGN LU)

*John H. Arnold, AIA – Killefer Flammang Architects*  
*Suzanne Lloyd-Simmons, IIDA – IIDA Associate*  
*George Taylor Loudon, AIA – GTL / HA*

Appropriate design in historic districts is necessarily compliant with the integrity of place and the environment. Rehabilitating buildings in historic districts is essentially sustainable design.

**PARKS WITHOUT BORDERS: PUBLIC PARK DESIGN  
ACROSS AGENCIES, BOUNDARIES AND SYSTEMS**  
(1.5 HSW LU)

*Claire Bowin, AICP, LEED AP – City Planner, City of LA*  
*Susan Cloke - Parks and Community Facility Planning,*  
*Community & Cultural Services, City of Santa Monica*  
*Stephanie Reich, AIA – City of Glendale, Planning Department*  
*Deborah Richmond, AIA – Touraine Richmond Architects*  
*Woody Smeck – National Park Service*

Parks Without Borders is a forum for the presentation and discussion of issues and case studies related to linking national, state and local parks.

**MANAGING THE LEED DOCUMENTATION PROCESS**  
(1.5 HSW/SUSTAINABLE DESIGN LU)

*Elizabeth Durney, LEED AP – KEMA Green*  
*Alexander Spilger – GreenStep Education*

This workshop will give participants an understanding of the

unique tools & systems involved with successfully managing the LEED documentation process.

**11:00 AM – 12:30 PM****TROUBLE IN BUILDING PARADISE? AN OVERVIEW OF  
AVOIDANCE AND ALTERNATIVES IN HANDLING IT** (1.5 LU)

*Allison Kuharski, AIA – Screed Architecture*  
*Marlon Schulman, Esq.*  
*Larry Slade, Esq. – Slade & Associates*

Achieving Success by Planning for Failure: Alternative ways to view and deal with the inevitable conflict(s) inherent in and arising during the building process.

**VERTICAL TRANSPORTATION (ELEVATOR) DESIGN  
AND TECHNOLOGY** (1.5 HSW LU)

*Michelle S. Baratta – Lerch Bates, Inc.*  
*Mike Farris – Lerch Bates, Inc.*

How does the correct application of elevator design affect your core especially at schematic design? How do you apply new technology and codes to building design? This seminar will help generate discussion on these issues.

**THE SPACE IN BETWEEN - DESIGNING THE PUBLIC  
STREET** (1.5 HSW/SUSTAINABLE DESIGN LU)

*Amber Hawkes – Torti Gallas and Partners, Inc.*  
*Martin Leitner, Assoc. AIA – Urban Studio*  
*Georgia Sheridan – Torti Gallas and Partners, Inc.*

The Street as Living Room: in an era of extreme makeover shows, design magazines, and starchitecture, why is street design stuck in the past? Learn new concepts for dynamic streets.

**RUNNING A DESIGN FOCUSED PRACTICE LIKE YOU  
MEAN IT** (1.5 LU)

*Michael Hricak, FAIA – Michael Hricak Architects*  
 Getting Creative About Being a Creative Business.

**LUNCH BREAK 12:30PM-1:45PM**



*Jules Seltzer*

■ Jules Seltzer Associates

JSA is your source for products and information  
8833 Beverly Boulevard, Los Angeles, CA 90048  
310-274-7243  
info@juleseltzer.com

**KRISTALIA**<sup>®</sup>  
ITALIAN DESIGN FOR INDOOR/OUTDOOR SPACES

Manufacturer's Representative:

**David Courtney Associates**  
310-872-6923  
david.dc.associates@gmail.com

**1:45 PM – 3:15 PM****FROM BEGINNING TO END** (1.5 LU)

*Jim Atkins, PE – Merlone Geier Partners*

*Sarah Dusseault – Senior Policy Advisor to Eric Garcetti, City of LA*

*Daniel Gehman, AIA, LEED AP – TCA (Thomas P. Cox: Architects)*

*Gail Goldberg, AICP – Department of City Planning, City of LA*

*Jan Perry – Councilwoman 9th District, City of LA*

*Bill Witte – The Related Companies*

What are the hurdles and lessons learned regarding the formation of effective partnerships between local government and private architects and developers?

**BELOW-GRADE WATERPROOFING FUNDAMENTALS**

(1.5 HSW LU)

*Thomas L. Bane, PE – Simpson Gumpertz & Heger Inc. (SGH)*

*Kimberly A. Shaw – Grace Construction Products*

*Judson A. Taylor, AIA – Simpson Gumpertz & Heger Inc. (SGH)*

This presentation presents basic concepts of below-grade waterproofing, pros and cons of typical waterproofing systems and common pitfalls and strategies to mitigate leakage.

**ARCHITECTS AND TRANSIT IN LOS ANGELES**

(1.5 HSW/SUSTAINABLE DESIGN LU)

*Sam Lubell – The Architect's Newspaper*

*Eric Owen Moss, FAIA – Eric Owen Moss Architects*

*Jorge Pardo, AIA – Los Angeles County Metropolitan Transportation Authority*

*Simon Pastucha – LA Department of City Planning Urban Design Studio*

*Geoff Wardle – Art Center College of Design*

*Peter Zellner, Assoc. AIA – SCI-Arc*

How architects can help reinvent Los Angeles's transit system.

**PLAYING BY THE RULES WINS SECOND PLACE** (1.5 LU)

*Thomas F. Bulatewicz, RA – Rainmaking Group*

Stretching the normal limits of competition to win your next Client!

**3:30 PM – 5:00 PM****DESIGNSTORM®: TAKING CORPORATE AMERICA BY SURPRISE** (1.5 LU)

*Rob Ball – Art Center Faculty*

*Karen Hofmann – Art Center Director of the Color, Materials and Trends Exploration Laboratory*

*Sherry Hoffman – (M)Arch. branded architectures*

*Grant Poznick – Art Center Student*

*TBD – Corporate America Client*

Designstorm® is a collaborative creative process that engages all participants; students, faculty and corporate partners, through brainstorming and rapid visualization techniques, to explore opportunities and develop innovative solutions for brands and manufacturers.

**THE CURRENT STATE OF WATER AND POWER IN SOUTHERN CALIFORNIA** (1.5 HSW/SUSTAINABLE DESIGN LU)

*Stuart Magruder, AIA, LEED AP – Studio Nova A Architects, Inc.*

*Paul Poirier, AIA, LEED AP – Poirier + David Architects*

Hear two perspectives on the current state of water and power issues in Southern California, focused in particular on how they relate to sustainability in architecture.

**CREATING THE “THERE” THERE: NEW PLACES, PUBLIC SPACES AND MOBILITY CHOICES FOR DOWNTOWN LA** (1.5 LU)

*Jessica Wethington McLean – Executive Director, Bringing Back Broadway*

*Melani V. Smith, Assoc. AIA – Meléndrez*

*Shiraz D. Tangri – Alston + Bird LLP*

*Ted Tanner, AIA – AEG Real Estate Development*

*Martha Welborne, FAIA – The Grand Avenue Committee*

An examination of Downtown projects creating a new sense of place in the urban core, including the Streetcar, LA Live!, Bringing Back Broadway and the Grand Avenue Civic Park.

**BIOTEAMING; USING LESSONS FROM NATURE IN DEVELOPING VIRTUAL DISTRIBUTED TEAMS** (1.5 LU)

*Cliff Moser, AIA – Neilsoft/Cadforce*

*Robert Vanech – Neilsoft/Cadforce*

How to create the next generation of high performing teams: Bioteam.

HINERFELD-WARD, INC.  
general contractor + custom millwork

3.1 PHILLIP LIM  
designed by Para Projects, LLC  
[www.para-project.org](http://www.para-project.org)

# BUILDING INSIDE OUTSIDE

THE HAPPY HOUSE  
designed by Neil M. Denari Architects  
[www.nmda-inc.com](http://www.nmda-inc.com)

HWI is dedicated to the construction of all innovative architectural projects. Our team is highly experienced in building residential, retail, as well as commercial projects for design-minded architects and clients.



## 9:15 AM–10:45 AM

### MORALITY AND ARCHITECTURE (1.5 LU)

*Alejandra Lillo, Assoc. AIA – Graft*

The changing conditions in terms of economy and politics require architects to rethink the aspects of morality in architecture.

### THE OWNER-ARCHITECT AGREEMENT: NUTS & BOLTS - MAGIC WORDS & PHRASES - INSURANCE (1.5 LU)

*Mehrdad Farivar, FAIA, Esq. – Morris Polich & Purdy LLP*

*Sherall Gradias – Dealey Renton & Associates*

*Christopher J. Menjou, Esq. – Morris Polich & Purdy LLP*

This presentation is designed to educate the practicing architect about approaching, negotiating, reviewing and closing a deal, using a written contract.

### BASIC HAND-DRAWING TECHNIQUES FOR ARCHITECTS AND INTERIOR DESIGNERS (1.5 LU)

*Scott Johnson, CID, IALD, LEED AP – Wolcott Architecture | Interiors*

Color hand-sketch secrets revealed: What was old is new again.

### THE ARCHITECTURE OF THE AFTERCITY (1.5 LU)

*Tom Marble, AIA – Marble Architecture*

Moving past the standard discourse on urbanism to address the question: Beyond or between public and private sector forces, is there a third way to make cities?

## 11:00 AM – 12:30 PM

### SOCIAL STRUCTURAL DEVELOPMENT (1.5 LU)

*Oliver Hess – Materials & Applications*

Experiments in community building projects that accelerate iterative development of structures for engaging public spaces.

### THINK SMALL: RECONSIDERING THE SIZE MATTER (1.5 HSW/SUSTAINABLE DESIGN LU)

*Ric. Abramson, AIA – Workplays studio\*architecture*

*Liz Falletta*

*Mott Smith – Civic Enterprise Associates, LLC*

*Todd Wexman – Auburn Home, LLC*

“Think Small – Reconsidering the Size Matter” shows that bigger is no longer automatically better when it comes to new options for single-family, detached homes.

### BRAND EXPERIENCE: THE BENEFITS OF INTEGRATED DESIGN (1.5 LU)

*Melanie Robinson, RAIC, AIGA – KAA Design Group*

Thought-leaders in branding, architecture and design discuss the importance of artistic collaboration and the use of innovative materials in creating superior marketing collateral.

### SUSTAINABLE ARCHITECTURAL EXPRESSION: SOLAR DESIGN FOR THE 21ST CENTURY (1.5 HSW/SUSTAINABLE DESIGN LU)

*Jesse Bornstein, AIA – Jesse Bornstein Architecture*

*Noah Golden – Golden Energy*

Explore cutting edge architectural design that integrates solar systems and exploits their esthetic, multifunctional and cost effective potential.

## LUNCH BREAK 12:30PM-1:45PM

## 1:45 PM – 3:15 PM

### MARRYING ART & ARCHITECTURE: HOW THE PERCEPTION OF PLACE IS BENEFITED BY SITE-SPECIFIC ART (1.5 LU)

*Frederick Fisher, FAAR – Frederick Fisher and Partners Architects*

*Merry Norris, Hon. AIA/LA – Merry Norris Contemporary Art*

*Marc Pally – Artist and Public Art Consultant*

*Ed Suman – Carlson & Company*

*Elyn Zimmerman – Artist*

This panel discussion will explore the cost, process and benefit of artist collaboration on new architectural projects.

## **INTEGRATING DESIGN AND TECHNOLOGY: PERFORMANCE AS PARADIGM** (1.5 LU)

*Frances Anderton – KCRW*

*Alice Kimm, AIA – John Friedman Alice Kimm Architects*

*Tom Reiner – Buro Happold*

*Ares Rosakis – Graduate Aerospace Laboratories, California  
Institute of Technology*

*Roland Wahlroos-Ritter – wroad*

We will highlight case studies of architectural projects that embody a high level of collaboration between architects and engineers, utilizing a wide range of contemporary digital design and fabrication methodologies.

## **USING WEB 3.0 TECHNOLOGIES TO PROMOTE YOUR PRACTICE** (1.5 LU)

*Mike McDonald – McDonald Construction and Development, Inc.*

*Peter Saal – Google*

*Michael Tadros – Igloo Studios*

Have you Googled yourself lately? Learn how to maximize your online presence by leveraging free, interactive web-based technologies.

## **CAN GREEN ROOFS BLOOM IN THE DESERT?** (1.5 HSW/SUSTAINABLE DESIGN LU)

*John Chase, Assoc. AIA – City of West Hollywood*

*Paul Kephart – Rana Creek*

*Deborah Weintraub, AIA, LEED AP – City of Los Angeles,  
Bureau of Engineering*

Join us for a provocative panel discussion about the realities, opportunities and challenges facing green roof projects in Los Angeles.

## **3:30 PM – 5:00 PM**

### **WHOSE ART IS IT ANYWAYS?** (1.5 LU)

*Michael B. Lehrer, FAIA – Lehrer Architects LA*

*Rebeca Mendez – Rebeca Mendez Design*

*Merry Norris, Hon. AIA/LA – Merry Norris Contemporary Art*

*Michael Palladino, FAIA – Richard Meier & Partners Architects, LLP*

*Laura Zucker – Los Angeles County Arts Commission*

What are the challenges and opportunities of adding meaning, delight and economy when artists and architects collaborate?

## **THE RITZ-CARLTON HOTEL AND RESIDENCES, JW MARRIOTT AT LA LIVE AND CONVENTION CENTER AT LA LIVE: DESIGN, ENGINEERING AND CONSTRUCTION OF A 55 STOREY CONDOMINIUM-HOTEL** (1.5 LU)

*John Adams, AIA – Gensler*

*Kap Malik, AIA – Gensler*

*Christian Robert, LEED AP – Gensler*

*Warwick Wicksman, AIA – Gensler*

*Ryan Wilkerson, S.E. – Nabih Youssef Associates |  
Structural Engineers*

A Hotel/Condo tower, an innovative structure, a parametric BIM model and other innovations allow the design team to create a solution beyond the standard high-rise hotel typologies.

## **PSYCHO-DECORATING 101, OR HOW TO WORK WITH AN INTERIOR DESIGNER TO CREATE A SEAMLESS PROJECT WHICH REPRESENTS THE CLIENT'S DESIRES AND CREATE A HOME WITH CHARACTER** (1.5 LU)

*Melinda Ritz – Interior Designer & Set Decorator,  
7-time Emmy nominee and 3-time Emmy winner for  
Excellence in Art Direction on Will & Grace*

Welcome to Psycho Decorating. "Psycho" is short for the psychology that is involved in interpreting the needs of the client to maximize their desires and preferences while developing a property to reflect an individual sense of style.

## **DECONSTRUCTION UNCOVERED** (1.5 HSW/SUSTAINABLE DESIGN LU)

*Mehrdad Dabbagh, LEED AP – Punchouse*

*Kris D. Kimble, Affiliate AIA/LA – the green hive*

*David McKechnie – Habitat for Humanity*

*Vince Sabotin, LEED AP – Waste Management (WM)*

ZERO waste goals are not pie in the sky. Hear from the team that put the plan in place and delivered on the promise.

## PRESENTING SPONSOR



A global provider of professional technical and management support services, AECOM (NYSE:ACM) provides a blend of global reach, local knowledge, innovation, and technical excellence in delivering solutions that enhance and sustain the world's built, natural, and social environments. With 43,000 employees around the world, AECOM is a leader in all of the key markets that it serves. In North America, AECOM is organized into five expertise-based business lines, AECOM Design, AECOM Transportation, AECOM Environment, AECOM Water and AECOM Energy. More information on AECOM and its services can be found at [www.aecom.com](http://www.aecom.com).

## GOLD SPONSORS

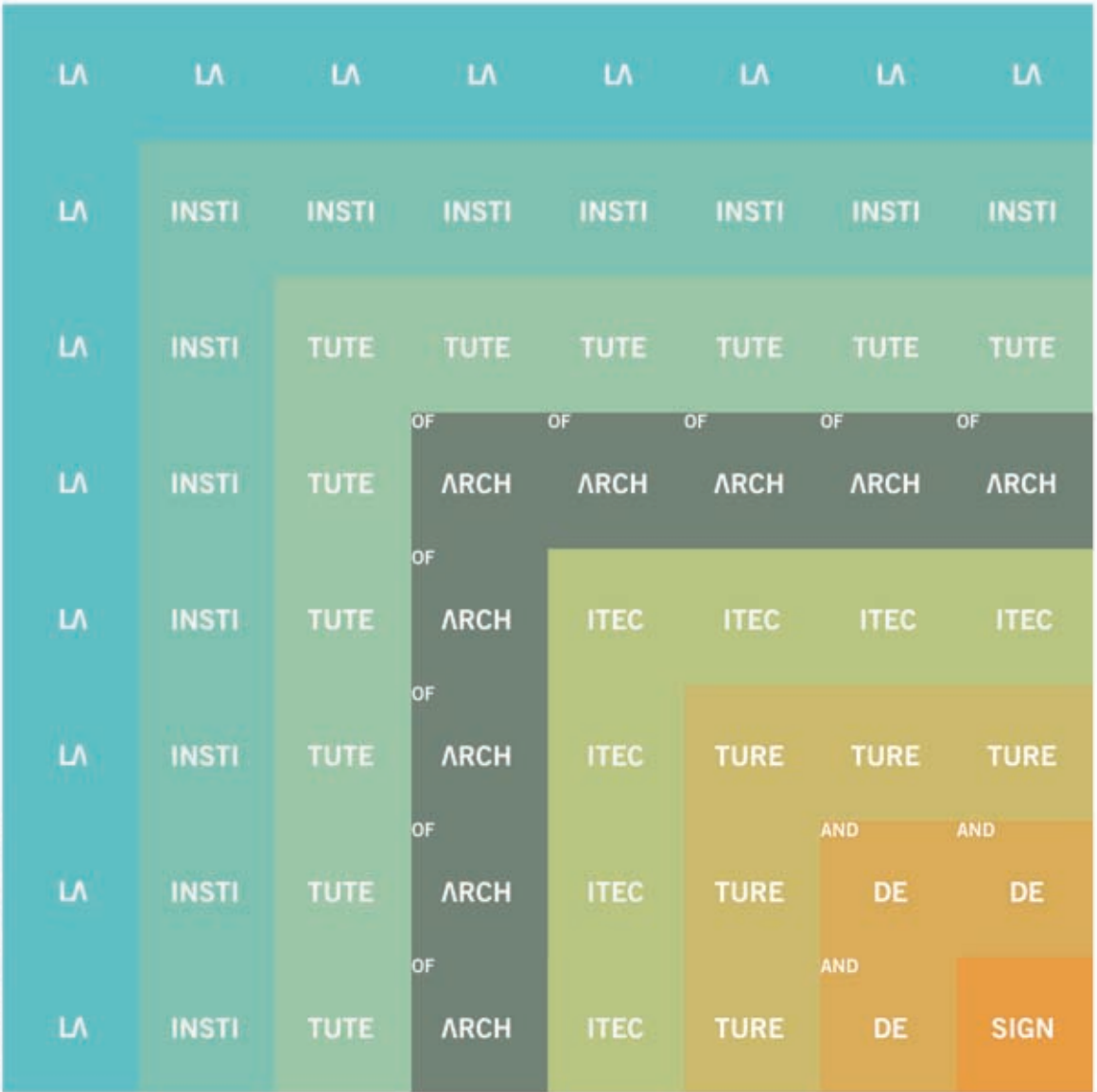







FORM magazine explores precedent-setting design by both established firms and emerging talent in architecture, landscape, furniture and product design, materials and technology. FORM's readers include more than 18,000 architects and design professionals throughout the country in fields such as interior design, real estate, industrial design, construction and entertainment. FORM is the membership magazine for AIA Los Angeles.

818.956.5313 [www.formmag.net](http://www.formmag.net)



## LAIAD

The Los Angeles Institute of Architecture and Design is a private school founded in 2001 to provide an alternative way for students to begin their architecture or design educational process.

[www.laiad.com](http://www.laiad.com)

FOUNDING DIRECTOR

**William M. Taylor**

*Principal of TFO Architecture*

[www.tfoarchitecture.com](http://www.tfoarchitecture.com)

CO-DIRECTOR

**Carl Smith**

*Partner with William Adams Architects*

[www.wadamsarchitects.com](http://www.wadamsarchitects.com)

2009

# RESTAURANT DESIGN AWARDS

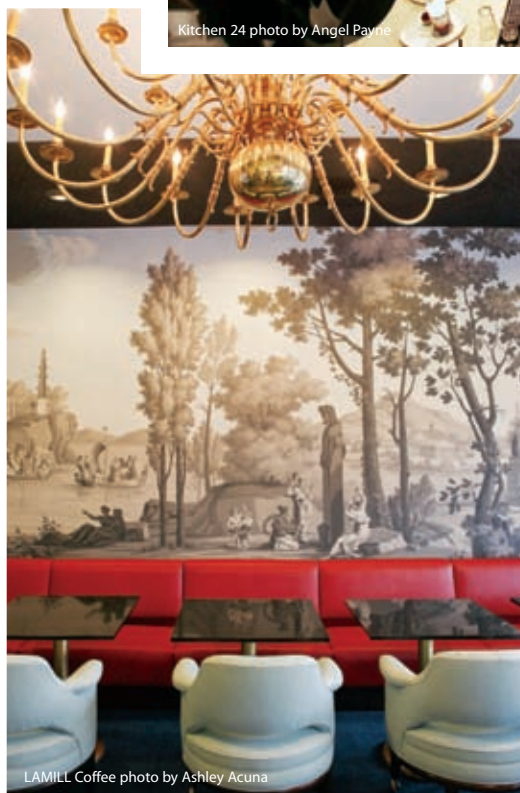
AIA LOS ANGELES



Kitchen 24 photo by Angel Payne



Comme Ça photo by Erhard Pfeiffer



LAMILL Coffee photo by Ashley Acuna

THE 5TH ANNUAL AIA LOS ANGELES

# RESTAURANT DESIGN AWARDS

CELEBRATING EXCELLENCE IN THE DESIGN OF RESTAURANTS, CAFES, BARS, LOUNGES & NIGHTCLUBS.

AWARDS CEREMONY Friday, June 26 at Dwell on Design @ 6:00 PM, Los Angeles Convention Center

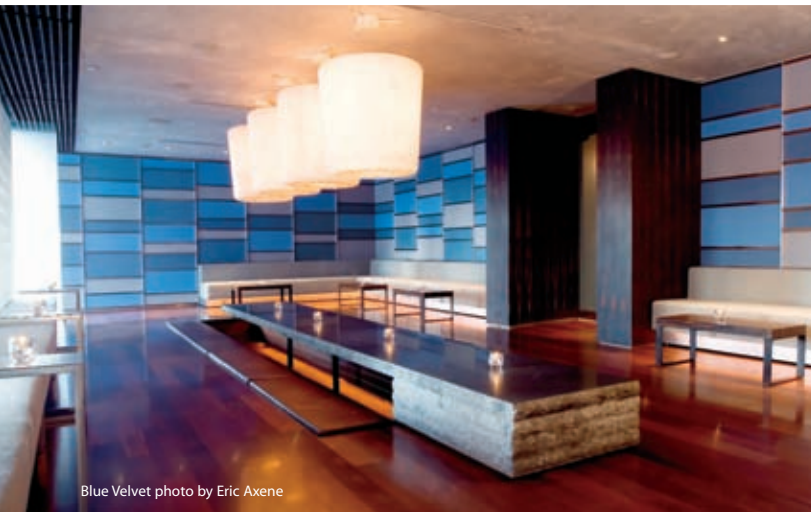
Tickets available at [dwellondesign.com](http://dwellondesign.com)



oneworld Lounge at LAX photo by Chris Barrett

“Dining out in Los Angeles is like going to the theater. One expects a show.”

–Carlo Caccavale, Hon. AIA/LA; AIA/LA Associate Director



Blue Velvet photo by Eric Axene



Luckyfish photo by Eric Axene



## AIA LOS ANGELES 2009 BOARD OF DIRECTORS

### PRESIDENT

John E. Kaliski, AIA

### VICE-PRESIDENT/PRESIDENT-ELECT

Paul A. Danna, AIA

### SECRETARY

Hsin-Ming Fung, AIA

### TREASURER

Stuart C. Magruder, AIA, LEED

### PAST PRESIDENT

Martha L. Welborne, FAIA

### DIRECTORS

Steven D. Ehrlich, FAIA

Julie Eizenberg, AIA

John T. Friedman, FAIA

Mahmoud Gharachedaghi, FAIA

Margaret Griffin, AIA

Deborah Weintraub, AIA, LEED AP

Hraztan Zeitlian, AIA, LEED AP

### AIACC REPRESENTATIVES

Michael A. Enomoto, FAIA

Katherine J. Spitz, AIA

### AIACC REGIONAL DIRECTOR

Pam Touschner, FAIA

### PUBLIC MEMBERS

Merry Norris, Hon. AIA/LA

Michael Woo, Hon. AIA/LA

### ASSOCIATE DIRECTOR

Nasim Yalpani, AIA, LEED AP, NCARB

### AFLA REPRESENTATIVE

James D. Weiner, AIA

### WAL REPRESENTATIVE

Sally Landworth, Hon. AIA/LA

### AIA-S, USC

Eric Anderson

Sukaina Fakhraldeen

Tina Hovsepian

Bernice Ngo

### AIA-S, UCLA

William Kong

### AIA-S, CAL POLY POMONA

Hector Gonzalez

Javier Meier

### AIA LOS ANGELES

Nicci Solomons, Hon. AIACC

EXECUTIVE DIRECTOR

### EX-OFFICIO SCHOOL REPRESENTATIVES

Hitoshi Abe

UCLA DEPARTMENT OF ARCHITECTURE  
AND URBAN DESIGN

Dr. Kyle Brown & Judith E. Sheine

CAL STATE POLYTECHNIC UNIVERSITY, POMONA  
COLLEGE OF ENVIRONMENTAL DESIGN

Jeff Daniels, AIA

UCLA EXTENSION  
ARCHITECTURE & INTERIOR DESIGN PROGRAMS

Qingyun Ma, AIA

UNIVERSITY OF SOUTHERN CALIFORNIA  
SCHOOL OF ARCHITECTURE

Norman Millar, AIA

WOODBURY UNIVERSITY

David Mocarski

ART CENTER COLLEGE OF DESIGN

Eric Owen Moss, FAIA

SOUTHERN CALIFORNIA  
INSTITUTE OF ARCHITECTURE

Linda Pollari

OTIS COLLEGE OF ART AND DESIGN

## MOBIUS LA 2009 COMMITTEE

Michael A. Enomoto, FAIA CO-CHAIR

David Montalba, AIA CO-CHAIR

Debra Gerod, AIA

Nicci Solomons, Hon. AIACC

Matt Krinsky

## AIA LOS ANGELES STAFF

Nicci Solomons, Hon. AIACC

Carlo Caccavale, Hon. AIA/LA

Amanda Daunis

Michael Din

Matt Krinsky

Maria O'Malley

Steve Tanner

Will Wright

